

ANNUAL REPORT & ACCOUNTS 2019

**MACMILLAN
CANCER SUPPORT
JERSEY**

Phil, diagnosed with prostate cancer in 2015, and in his words 'still here and living life to the full'

THE LOUNGE

charity chat chill

CONTENTS

Welcome from our Chairman	1
A message from our Chief Executive	2
Strategic Update	3
Future Activities	4
Our Financial year at a glance	5
How we helped people affected by cancer	6
Service User story	7
About Us	8-9
Meet our team	10
Volunteers	11
Directors, structure, governance and management	12
The Oasis	13-15
The Lounge	16-17
Fundraising Review	18
Financial Review	19-20
Financial Report	21
Financial Statements	22-24
Notes to the financial statements	25-32
Officers and professional advisors	33
Impact of Covid-19	34
Poem from our Chairman	35
Board of Directors	36
Contact Us	37

WELCOME

It's interesting to start on this report with Lauren in the midst of the Covid-19 pandemic. I'm in lockdown due to vulnerability that I'm told comes with my age and Lauren is coping with a youngster, working from home and a half finished house building project. I am just thankful that the Government of Jersey allows me 2 hours of exercise each day, and that I have a nice garden and the lanes of St Martin to keep me both contented and fit. My heart goes out to so many whose lives have been turned upside down with this pandemic, not least, so many who use our services and who are affected by cancer. To go through what many are going through, with the support and help of friends and family is one thing, but to be denied that physical comfort, the hugs of friends and family at such a difficult time is unimaginable.



Brian Frith, Chairman

I can only hope that the huge efforts all our team are putting into supporting those affected by cancer in Jersey are bearing fruit and that we're getting the word out that we're very much open for business, despite having to physically close our premises in accordance with government directives. I can only marvel at the ingenuity of our team in finding new and innovative ways of delivering our services. Job descriptions have been scrapped, agenda and timetables cast aside, as everyone tries to help those most vulnerable and in need, at this most desperate of times.

For many years, my most favoured quote has been 'How do you make God laugh'? Answer of course is 'Tell him your plans'. John Lennon made a similar point when he penned the lyrics to Beautiful Boy 'Life is what happens to you while you're busy making other plans'. In that regard, the plans we made towards the conclusion of 2019 can largely be confined to the bin, given the current situation. However, what we can take comfort from are the achievements of 2019 which we think were significant and exciting. What is also hugely comforting is that we believe we are in a position to ride out the Covid-19 storm, to maintain a high level of service and to retain and incentivise our wonderful staff and our army of amazing volunteers. We do not have large capital reserves, nor any legacies or investments that we can fall back on, but we have been prudent in keeping a reserve for normal expenses and we are optimistic that with careful management and if we are allowed out of the current restrictions by year end 2020, that we will still be operating and ready to resume fundraising with vengeance in 2021 (in the full knowledge that every other charity will be doing the same, in a world that has taken a huge economic shock). Wish us luck!

In closing this report, we must give huge thanks to our staff, to our amazing volunteers and to our board, all of whom give their absolute best for Macmillan Jersey and without whom the charity would not function. Also, the inspirational stories that come from The Oasis, Macmillan Jersey's cancer support and wellbeing centre, and the acts of resilience and fortitude that come from everyday people of Jersey. I believe we both feel that it is a privilege and a pleasure to be a part of this great charity.

Brian Frith

Chairman of Macmillan Jersey, 2008 to present

A MESSAGE FROM OUR CHIEF EXEC



Brian Frith, Chairman

Lauren Perchard-Rees, CEO

Andy Smith, Director of Fundraising

2019 was another big year for Macmillan Jersey, in maintaining our business as usual activity, whilst furthering our service and fundraising operation as part of our growth plan. It really does take a community to do what we do as a team of only 6 paid staff (as of March 2020), and we could not do all we do without everyone's input along the way.

I'd like to personally thank our Board of Directors for volunteering their time and expertise and supporting us through what was a successful but challenging year.

I would also like to thank our small and dynamic staff team who worked so hard to keep up the fast pace of last year's growth activities, and did so with passion and flexibility, all because they care so much about the charity's existence and what it means for people in Jersey affected by cancer. I am so humbled by their commitment.

A really important final thank you to our loyal group of volunteers, you are truly special individuals and inspire us daily in what you do to help us and ensure our services are diverse, sustainable and delivered with compassion and care.

A key challenge for Macmillan Jersey is the ever-growing competition for support and funding within the sector, especially the cancer subgroup of the charity sector. In the Autumn of 2019 a new group was formed to bring together the local cancer charities and Government of Jersey representatives. The purpose of this 'cancer support charity cluster' is to share information and identify collaborative working opportunities. In time it is hoped this group will be a force for change for cancer support in Jersey, creating charity teams that are joined up and meeting the needs of local people affected by cancer, in the many and diverse ways they are.

Lauren Perchard-Rees

Chief Executive Macmillan Jersey, 2016 to present

STRATEGIC UPDATE

Our current 5-year strategy, developed in 2017, focuses on three key objectives: -

1. Ensuring we have the right environment to provide our services from and for our employees to thrive in

With increasing numbers of people using our services and additional services being developed, a decision was made in the Autumn of 2018 to take on additional premises, where our non-cancer support team would be based, such as our fundraising, communications and admin volunteers. The location of these new premises also provided an opportunity to have a more visible presence in St Helier, to help increase awareness of the existence of Macmillan Jersey, a wholly local charity. In July 2019, The Lounge for Macmillan Jersey opened. It is a mix of charity retail in the form of a cafe and second hand (donated books) bookshop, with a large office and meeting facility above it. As a direct consequence of moving half of the charity's operation to these premises, it has meant we now have additional support service rooms at The Oasis. We have gained one additional full time, large quiet room for emotional support services and relaxation classes and we have a new clinic room for other allied health care professionals (such as the Macmillan Oncology Specialist Dietician) to provide community based clinics from.

2. Ensuring we place emphasis on the importance of effectively managing all of our stakeholder relationships

Stakeholder mapping exercises were conducted for both our cancer support team and wider charity operations, helping identify the relationships that required regular engagement and who would be responsible for this. By developing stronger relationships, we have been able to foster opportunities for collaborative working and resource sharing. Relationships also support us with our communication; helping us get the right messages out within the community.

We provided outreach education and information days across the GP and business sectors. We delivered two cancer@work seminars to corporates, which included HR staff and managers and they have proved to be a great success in ensuring employers are aware of the holistic and legislative aspects of managing cancer in the workplace. We also ran 3-day outreach stands and presentations to three of the largest GP practices, to ensure GP's were aware of our service provision and how to signpost to it.

3. Exploring opportunities for collaborative working with other cancer charities in Jersey

We all share the same goals to support and make the lives of people in Jersey affected by cancer a little better and we do that in differing but similar ways. In 2019 we proactively engaged with other cancer charities to explore ways of co-funding, resource sharing or working more closely together, in the future. We are at the start of this journey, but with the development of a cancer care cluster that integrates the local cancer charities, with cancer managers from the Government of Jersey, we hope to improve access to support and care and create ways of doing what we do better, together.

A final achievement for 2019 was the recruitment to a post that we co-created with the hospital dietetic team – the Macmillan Oncology Specialist Dietician. This post has been funded for three years by Macmillan Jersey and Macmillan in the UK. Within this period the aim is to improve the nutritional status of cancer patients and empower those finishing treatment and in recovery with the knowledge to make healthy decisions regarding their diet and nutrition.

FUTURE ACTIVITIES

As we write this report, we are in the process of implementing our business continuity plan to help us maintain our operation during the Covid-19 crisis. Our priority during this time is the safety and health of our staff, volunteers and service users. We are reminded that we can have a plan for the year ahead, but sometimes things out of our control come along and change our plans significantly. Our immediate focus is to adapt our service to offer more telephone support – from emotional support and practical information to regular 'check-in' calls. We may also have to flex our services and remit to support the wider health community, during this time.

A few objectives we still hope to deliver during the 2020 period include:

1. Expand our group support and education sessions. Currently we deliver a monthly session on wellbeing and self-care. Taking onboard the views of service users, we will expand our group programme to cover other common issues/needs. These may be virtual depending on the situation with Covid-19.
2. Continue to manage our stakeholder relationships and community outreach opportunities.
3. Reflect on the activity and impact during the Covid-19 pandemic and put in place a plan to ensure the financial stability of the charity as it's expected that our reserves will be significantly depleted by the end of 2020.
4. Reflect on what we have learnt and what we will change as a team, as a direct consequence of working differently during the pandemic.

It's thanks to you, our supporters, partners and donors that we can continue to do what we do, whilst managing a programme of growth and evolution, that will ensure we are in a position to meet the growing number of people that will benefit from our support in Jersey and still meet their needs in an increasing number of ways, as more people live beyond cancer.



OUR FINANCIAL YEAR AT A GLANCE

(To the nearest £1,000)

We raised a total of £523,000 in 2019

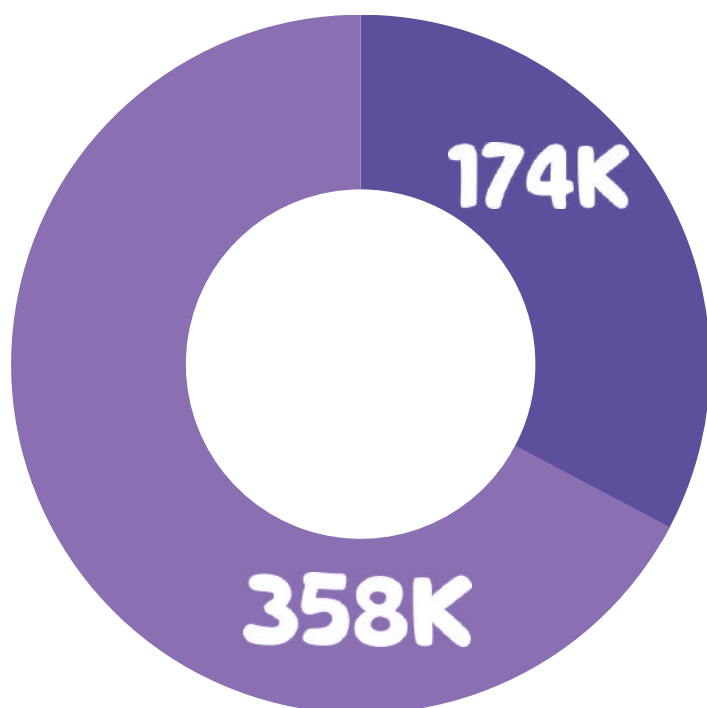
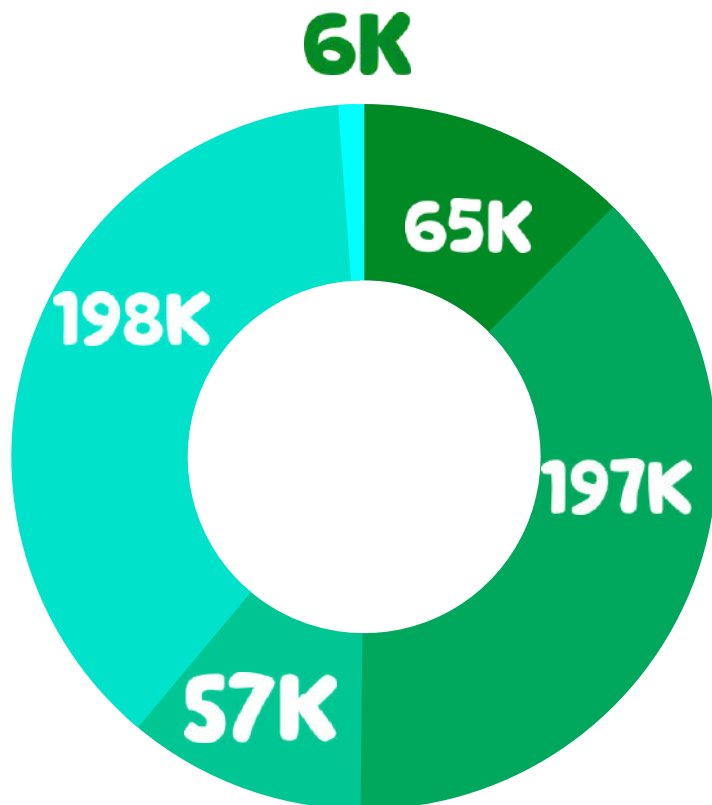
Trading activities and central events - £198,000 (38%)

Donations and third party fundraising - £197,000 (38%)

Legacies and in memorium - £65,000 (12%)

Trusts, grants and foundations - £57,000 (11%)

Interest received - £6,000 (1%)



Our Expenditure totalled £531,000

Expenditure on charitable activities - £358,000 (67%)

Costs of raising funds - £174,000 (33%)

HOW WE HELPED

3478

Visits to The Oasis, Macmillan Jersey's cancer support and wellbeing centre last year.

1855

Emotional support and practical sessions

451

New people visiting and using our support services

77

Volunteer counselling sessions provided

1295

Group sessions visits
These include: Exercise classes, relaxation sessions and support/social groups

251

Complementary therapy sessions
These include: Massage, reiki and reflexology

The results from our annual Service Evaluation (small sample of 34 respondents) reflected that:

- 100% of people asked were satisfied with the communication and listening skills of those providing information and support
- 100% felt the services provided the support they need (or did in part)
- 100% would use the service again and recommend their family and friends to visit us.

THE
OASIS

MACMILLAN
CANCER SUPPORT
JERSEY

SERVICE USER STORY

Jenny and Amy Le Vannais Story



Jenny Le Vannais and Amy Le Vannais

'I first heard about Macmillan Jersey from my daughter's friend who worked there. The first time I visited The Oasis I was welcomed with a warm smile and immediately felt at ease and calm. I wanted to find ways to help me carry on my life the best way I could during my treatment.

My first visit to The Oasis fell on one of their coffee mornings where I met a mixture of people. I felt at ease and able to chat freely to people in similar situations. I accessed some of the complementary therapies available and they included Reflexology and Reiki, Both made me feel so calm and relaxed. I really enjoyed attending the weekly lunchtime relaxation classes. I found these classes to be incredibly relaxing for my whole body.

If anyone is thinking about going to The Oasis I would say do not hesitate. Please go and you will never look back, they are a team of wonderful staff and volunteers ready and waiting to support you. It has been the best thing I have done to support me through my treatment'.

Jenny Le Vannais

'I chose to support the charity because they are just amazing! They have supported both my Mum and me since my mum was diagnosed in 2018. They are still supporting my mum now. I wanted to give something back to the charity so decided to take part in their 'Trek to Freedom' in 2019. I did this with 10 other people who all had their own story and connection to Macmillan Jersey.

If anyone is thinking of doing a challenge for charity, I would strongly urge them to choose Macmillan Jersey. Every aspect of the charity is amazing from the service they provide to the community they build with their supporters! Thank you for everything'.

Amy Le Vannais



Amy Le Vannais, Trek to Freedom 2019



Left to right, Alec Le Vannais, Amy Le Vannais, Peter Le Vannais and Jenny Le Vannais

THANK YOU

Amy for raising an amazing £2052.30 for Macmillan Jersey on your 'Trek to Freedom' challenge.

We would also like to thank Alec and Peter Le Vannais who also wanted to give something back to the charity and voluntarily designed the logos for our charity book cafe The Lounge!

ABOUT US

Our mission, vision and values

It is the mission of Macmillan Cancer Support Jersey to support and empower people in Jersey affected by cancer. Our future vision is that everyone in Jersey affected by cancer will have access to the support and information they need to take back control and to not feel alone in their experience.

Our team has recently defined values to reflect what is most important to us:

- We are professional and welcoming
- We treat everyone with kindness
- We put the individual at the core of all we do

Our history

In the 1980s, Bryan Skinner, a Jersey resident and cancer patient, wrote an article concerning the lack of information and support available to patients. He linked up with Vicky Clement-Jones, a research doctor and fellow cancer patient, to form Cancerbackup in the UK. After Bryan's death, his widow Celia was instrumental in establishing Cancerbackup in Jersey. Following the merger in 2008 of Cancerbackup and Macmillan, our then Chairman, Brian Frith, successfully negotiated a Collaboration Agreement with Macmillan UK and organised the incorporation of Macmillan Cancer Support (Jersey) Limited, an independent local charity, where every penny raised stays in the Island to fund the vital services we provide.

Our challenges and aim

Cancer incidence is on the rise. 1 in 2 people will hear the words 'you have cancer' in their lifetime, meaning that all of us in some way will become affected by a cancer diagnosis, whether ourselves or through supporting someone we know. Approximately 700 people in Jersey are diagnosed each year and we estimate at any point there are 4,000 people living with or beyond a cancer diagnosis.

This increase is mainly because people are living longer. As a result of improved treatments, many more people will live beyond cancer and our service aims to meet these growing demands and changing needs. Macmillan Jersey's aim is to support and empower anyone in Jersey affected by cancer, whether that be the person diagnosed or someone providing support.

How does Macmillan Jersey work with Macmillan Cancer Support in the UK?

Macmillan Jersey and Macmillan Cancer Support UK have a collaboration agreement whereby we maintain the Macmillan brand and the quality standards in place for providing cancer support and they provide us with the training and information materials we need to do this. There is also a Macmillan UK representative on our Board of Directors. Macmillan Jersey is financially and operationally independent of Macmillan in the UK.



Working with others

Macmillan Jersey is committed to working in collaboration with others who share an interest in supporting people in Jersey affected by cancer. It will not duplicate work that is already meeting the needs of people affected by cancer and will continually explore opportunities for partnership working.

Registered name of charity

Macmillan Cancer Support (Jersey) Limited (“Macmillan Jersey”)

Incorporation

Macmillan Cancer Support (Jersey) Limited is a company limited by guarantee and was incorporated on 25 September 2009 under Registered Number 104090.

Registration

As an incorporated charity (non-profit organisation), Macmillan Cancer Support (Jersey) Limited is registered with the Jersey Financial Services Commission and is a member of the Association of Jersey Charities (number 355). It is also registered with the Jersey Charity Commissioner under the new regulatory arrangements of the Charities (Jersey) Law 2014 (number 58). The charity's governing document is the Memorandum and Articles of Association, dated 25th September 2009.

Charitable Objects as detailed within our Memorandum and Articles of Association

The objects of Macmillan Jersey are as follows:

- to provide support, assistance and information directly or indirectly to people affected by cancer in particular, but without limitation, to people who are resident in the Island of Jersey;
- to further and build cancer awareness, education and research;
- to promote and influence effective care, involvement and support for people affected by cancer (which shall include individuals who have suspected or confirmed diagnosis, their carers, families, work colleagues and anyone else directly or indirectly affected by cancer), in particular, but without limitation, in the Island of Jersey.

Principal Activity

For the last 33 years, Macmillan Jersey has been providing high-quality support, information and wellbeing services to anyone affected by cancer. We work in partnership with Macmillan Cancer Support in the UK and operate from The Oasis, our cancer support and wellbeing centre at the Lido Medical Centre. We aim to help patients, their friends, families and colleagues to cope with cancer and the treatment of it – from pre-diagnosis, through treatment, to cure, continuing illness or death and into bereavement.

Public benefit statement

The Directors have considered the purpose, aims and objectives of the charity and its current and planned activities against general guidance on public benefit. The Directors are satisfied that the charity's purpose, aims, objectives and activities are fully consistent with charitable purposes as defined in the Charities (Jersey) Law 2014 Article 6.

Macmillan Funded Health Care professionals in Jersey

During 2019 Macmillan Jersey worked with Macmillan in the UK and Jersey Hospital to create a new role to provide expert dietetic support to people diagnosed with cancer, across the patient pathway. In July 2019, Laura Foster was successfully appointed to the position of Macmillan Oncology Specialist Dietician.

In the past we have also funded the roles of professionals working in cancer care at the Jersey General Hospital. There are currently three Macmillan nurses in post, two are breast care specialists and one is a urology specialist.



Laura Foster, Macmillan Oncology Specialist Dietician, appointed July 2019



MEET OUR TEAM

We cherish and carefully protect every single penny that our amazing donors give to us, but at the same time, we recognise that sensible, considered spending can reap benefits many times over, in terms of the support that allows us to provide. Our small team of remunerated staff are highly qualified and dynamic professionals. They regularly undertake learning activity to ensure continual development of their roles and expertise within our charity. We believe we are an open and transparent organisation, respectful and compliant with the requirements of the charity regulator and ensuring we address the needs of the public.

FROM LEFT TO RIGHT:

Kate Fitzpatrick - Cancer Support and Wellbeing Practitioner

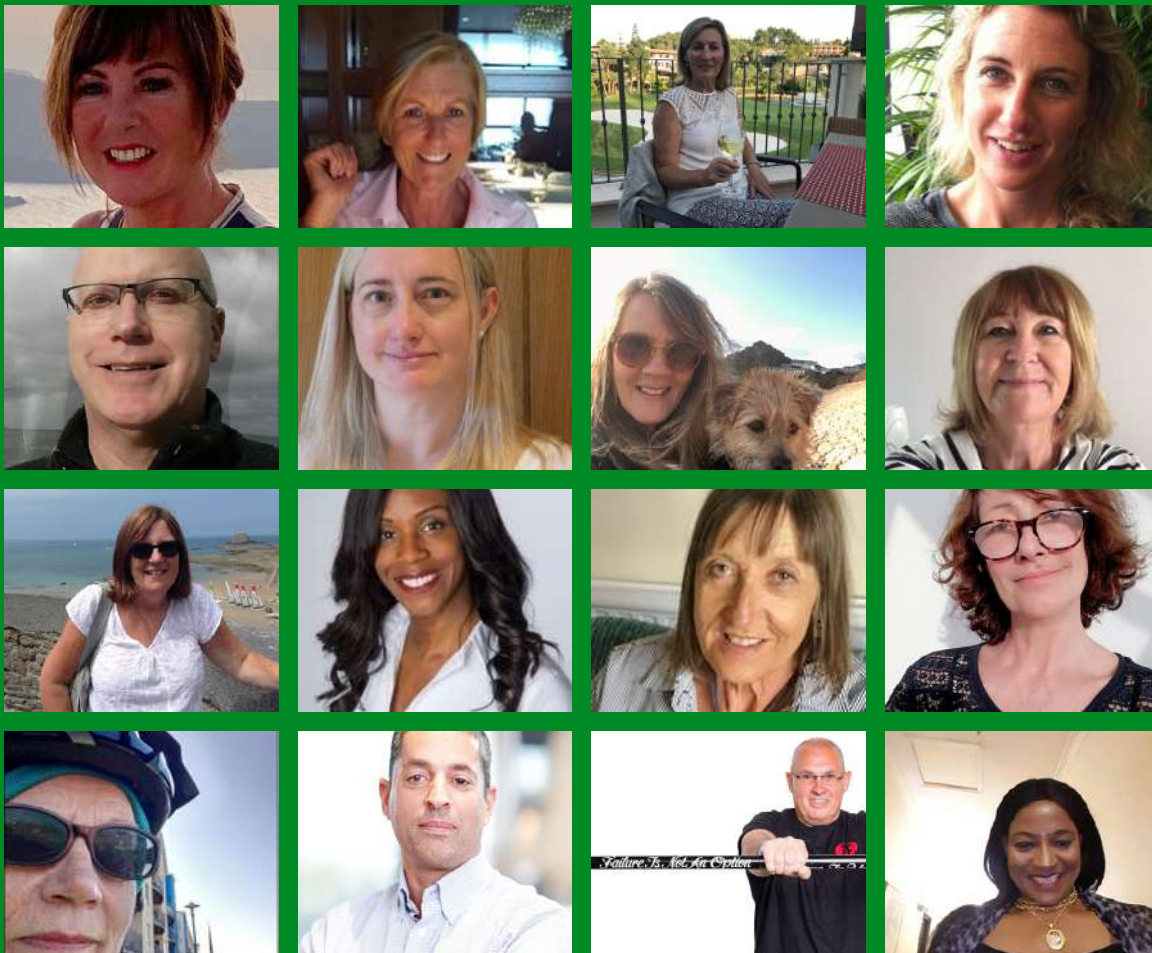
Lauren Perchard-Rees - Chief Executive

Kevin Alway - The Lounge Manager

Steph Gibaut - Head of Operations and Fundraising

Sandra Silva - Assistant at The Lounge

Pam Aubert - Centre Manager



VOLUNTEERS

During 2019 over 50 volunteers contributed to the operation of the charity.
Volunteer roles include:

- Our Board of Directors**
- Cancer support volunteers**
- Complementary therapy volunteers**
- Counsellor volunteers**
- Admin volunteers**
- Book cafe volunteers**
- Fundraising volunteers**
- Yoga and Tai Chi instructors**

We recognise the extremely valuable contribution made by volunteers and wish to place on record our grateful thanks for that commitment. No monetary amounts are included in the financial statements to reflect the value of work undertaken by them.

Directors

Directors serving during 2019 and up to the date of this report are set out on page 35 of this report.

Macmillan Jersey recognises that a robust, independent and effective Board of Directors is essential if the charity is to achieve its objects; that the Board must have available to it all of the knowledge and skills required to govern the charity; and that individual directors must have sufficient knowledge, both of being a director in general and of the charity's activities, to enable them to carry out their role.

Directors receive no remuneration for their time and can claim only documented expenses incurred in carrying out their duties in line with the Expenses Policy. You will see their names and details on the back page of this report and we thank them most sincerely for the combined skills and dedication they bring to the Board.

Structure, governance and management

The Board of Directors is responsible for setting Macmillan Jersey's strategic objectives, the strategy to achieve them and the major policies of the charity. It is responsible for directing the Chief Executive, monitoring performance and for identifying and managing the major risks facing the charity. The Board meets formally four times a year and one of these meetings is a half-day Strategic Planning session with the management team.

The Chief Executive supports and advises the Board in its activities and, in line with agreed delegated responsibility and subject to executive limitations, is responsible and fully accountable for achieving strategic objectives, including annual key objectives agreed by the Board.

A corporate governance sub-committee has been developed to be responsible for the oversight of corporate governance for Macmillan Jersey, to include the signing-off of policies and procedures and includes the Director of Governance, Chief Executive, Centre Manager, Head of Operations and Fundraising and skilled volunteer representation. This committee reports directly to the quarterly Board of Directors meetings.





Pam Aubert, Centre Manager

THE OASIS



Kate Fitzpatrick, Cancer Support and Wellbeing Practitioner

From diagnosis and beyond, we will help people find their best way through...

Being affected by cancer whether you're a patient, family member or friend can be overwhelming. When you feel anxious or stressed about the impact cancer is having on your life, it is common to feel helpless and 'out of control'. That's where the Oasis can help. The dedicated service team at the Oasis provide a warm friendly welcome, and most importantly a confidential listening ear to anyone that comes through our door. All our services aim to encourage people to think about what they 'can do' to improve their situation, to take back control, by improving their overall wellbeing.



Our service users tell us that making the decision to come to The Oasis can be a difficult one, but once through the door they have found a place where they have 'time and space' to think, to talk openly without judgement, and where they can make sense of their thoughts and feelings.

It is also a happy place; they make new friends; they take part in fun activities; they are supported, but are also a support to others.

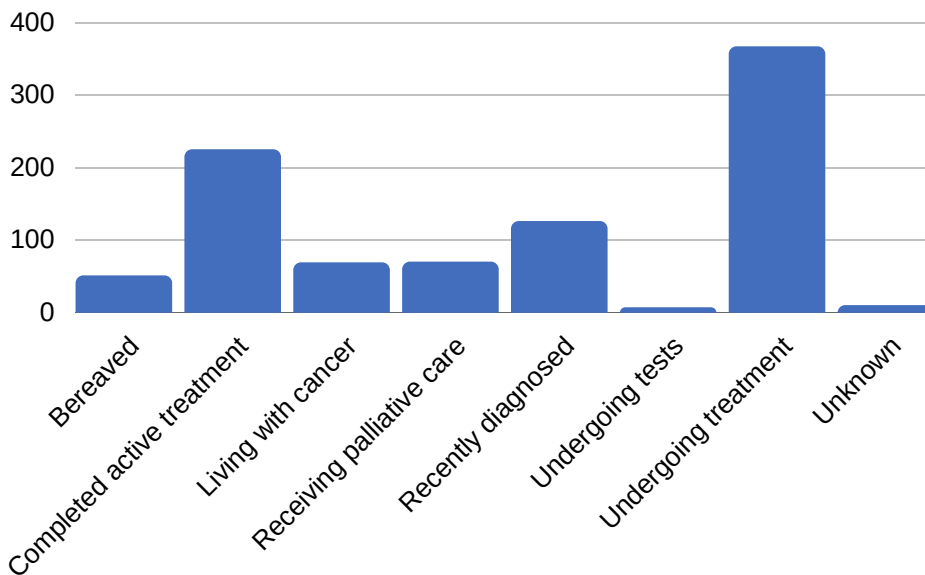
OUR IMPACT

In 2019 we provided **3478** support sessions at The Oasis, our cancer support and wellbeing centre at the Lido Medical Centre.

We developed our community support by hosting 3 GP Outreach's and 2 cancer@work seminars. We launched our wellbeing workshops and also ran 1 life after cancer course.

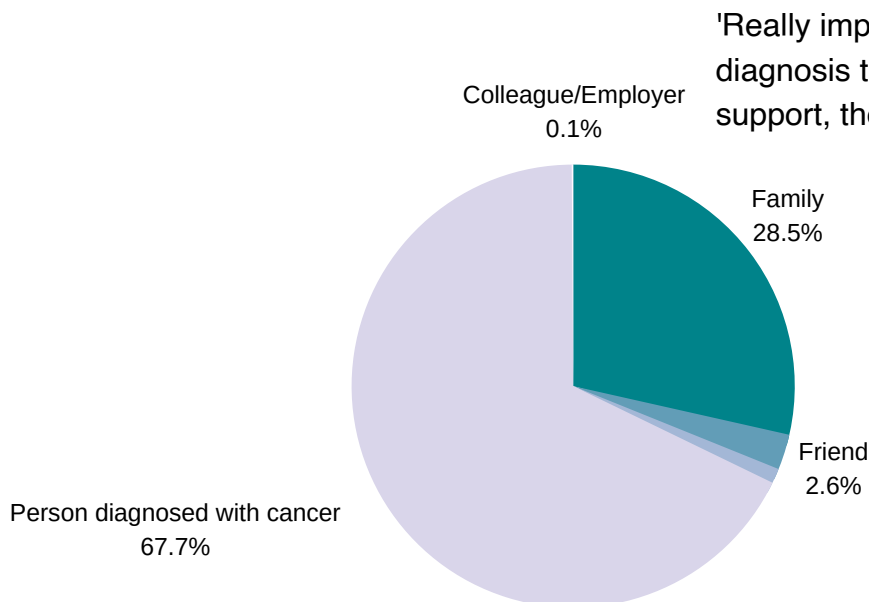
Throughout the year, the service welcomed 451 new service users, equating to around 13% of total visits.

The stage in the cancer pathway of the person visiting The Oasis



'We are here to support people from diagnosis, through treatment and beyond'.

The type of person accessing our services



'Really importantly, it is not just the person with the diagnosis that can reach out for advice and support, their support network can too'.

Key Highlights

- We attended 3 GP practices for community outreach and reached over 1000 members of the public. We saw 43 referrals from GP's as a result.
- Our first cancer@work seminars were delivered to over 75 delegates. The event was supported by the preventative medicine team from GoJ, Bedell Cristin and other local charities.
- Our cancer and wellbeing practitioner delivered 3 wellbeing workshops and topics included sleep, exercise, fatigue, stress and anxiety.
- The Prostate Cancer Support Group has more than 70 members. They meet once a month and have regular speakers from healthcare professionals and there is a weekly prostate cancer exercise group, funded by Macmillan Jersey.
- Complementary therapies were delivered to 231 people, which included massage, reiki and reflexology.



EMOTIONAL SUPPORT
PRACTICAL INFORMATION
WELLBEING SERVICES
GROUP SUPPORT
RELAXATION CLASSES
LIFE AFTER CANCER
WORKSHOPS
PROSTATE CANCER
SUPPORT GROUP



'Volunteering at Macmillan Jersey has given me a sense of purpose. I get a real sense of wellbeing when I know I have tangibly helped someone who has visited The Oasis.'

John Hind, Cancer Support Volunteer

& MACMILLAN JERSEY'S FUNDRAISING HUB!



Steph Gibaut, Head of Operations and Fundraising



Kev Alway, The Lounge Manager



Sandra Silva, The Lounge Assistant

2019 saw the opening of our amazing charity book cafe, The Lounge. With this opening we also welcomed two new members of staff to our team, Kev and Sandra.

At the end of 2018, we began our search for a new office to home our fundraising team. With our services at The Oasis growing, we were running out of valuable space. After searching for over 4 months we found this great venue, and with it came the idea of The Lounge.

Our mission with The Lounge is to embed ourselves in the community of Jersey, to raise more awareness of our services at The Oasis and to raise further funds for the charity.

THANK YOU TO EVERYONE THAT SUPPORTED US IN 2019 HERE ARE SOME HIGHLIGHTS



11,000

Hot Drinks sold

20000

Books Sold

6000

Volunteer Hours

250,000

Minutes open

FUNDRAISING REVIEW

We achieved 29% over our projected fundraising target during 2019.

There were a number of highlights and additions to our income streams including opening The Lounge for Macmillan Jersey, our inaugural Trek and an extraordinary legacy donation.

We were supported by 11 amazing individuals who took part in the Trek to Freedom trail in September and they raised an incredible £23,741 (net). Our very first car raffle, which was sponsored by DG Slatter and supported by Jacksons Motor group, raised £9,077 (net).

Events' fundraising equated to 32% of the overall income in 2019. We had 151 registrations for Jersey's Greatest Coffee Morning in 2019 which raised £36,083 (net). It was the last year that C5 Alliance sponsored the event.

Our annual Golf Day, sponsored by Brewin Dolphin, raised £18,383 (net) and had the maximum number of teams participate.

We had many individuals taking on personal fundraising challenges in 2019, including the amazing Pete Wright. His challenges included solo participation in the Rowathon and doing the distance twice over and his fundraising year culminated in pulling a car the distance of a marathon. The combined total raised by individuals in 2019 was £67,526 which was £23,526 above projection.

Corporate support was excellent in 2019 with a total of £89,086 raised, which was 45% over forecast. A large donation of £34,000 from an individual corporate is included in the corporate figures. Trust donations equated to 10% of income in 2019 and was down £23,570 on forecast. A number of previous regular Trust donations were not repeated in 2019.

The Lounge for Macmillan Jersey took in £20,216 (gross) in its first 5 months of trading, which we are pleased with. We saw an increase month by month in sales (apart from December). Feedback from customers has been excellent and this venture is helping us raise our profile to a wide demographic of the community. The Lounge has also been an excellent venue for hosting charity social events for volunteers and stakeholders and hosting our quarterly board meetings.

'We would like to take this opportunity to thank everyone who raised money for us in 2019. We are so grateful to have such amazing supporters who work alongside us to provide the vital funds needed to support local people affected by cancer in Jersey. Together, we made a huge impact on our little community. We look forward to working alongside you all again in 2020 and welcoming new fundraisers to our Macmillan Jersey family'



Steph Gibaut, Head of Operations and Fundraising

FINANCIAL REVIEW

The detailed financial figures for the year ended 31 December 2019 are set out on pages 22 to 24.

The charity's principle funding sources are donated income (donations, legacies and grants) and fundraising activities.

Macmillan Jersey's income increased by just 2% during 2019 whereas its expenditure increased by 29% resulting in a small loss of £8,054.

The increased expenditure is largely due to the refurbishment and opening of The Lounge. At the time of writing this Report, there are concerns about the postponement of events and reduced individual fundraising and donations due to the outbreak of Covid-19. However, the charity maintains reserves to cover such eventualities, so the Board is confident that the charity will not have any major financial difficulties.

RESERVES POLICY

It is the policy of the charity to accumulate funds to be used for the charitable purposes included in the constitutional documents and agreed strategies. All funds not distributed in the year that they are raised will be held on account for future years.

As the activities of the charity develop and donated funds are accumulated, it is the policy of the charity to maintain a sum equivalent to a minimum of six (6) months' general activities and a maximum of twelve (12) months' general activities. As at 31 December 2019 £406,509 were held for this purpose. If excesses of income over expenditure are accumulated to a sum equivalent to more than twelve (12) months' general activities, the Board should consider allocating these funds to Special Projects in line with its charitable purposes and objectives. These Special Projects may be in the current year or in future years, as a one off or ongoing basis.

RESTRICTED FUNDS

As at 31 December 2019 there were restricted funds of £9,969. The remaining £31,796 from an anonymised grant provider in 2016 were used during 2019 to help finance The Lounge, with their consent. In 2019 the After Breast Cancer charity "ABC" donated £2,000 to be used to host Nicola Jane events (post breast cancer surgery) and these are yet to be used. The funds received from the Jersey Association of Cancer Nurses in 2018 now amounts to £7,969 and will be used for networking and education purposes.

RISK MANAGEMENT

The Board of Directors is responsible for the identification and management of risk. This process is managed by way of the Risk Register, which documents the nature of the risk, the potential impact and mitigation factors. The Risk Register is reviewed and approved at each quarterly Board meeting.

The Board has identified the following main areas of risk:

- Governance risk in terms of whether the charity has a clear strategic direction and is able to deliver its objectives.
- Operational risk in terms of delivering the service
- Financial risk due to not having sufficient resources to deliver the charity's objectives
- Environmental risk in terms of the charity's reputation and legal and regulatory changes.

DIRECTORS' RESPONSIBILITIES

The Directors are responsible for preparing their report and the financial statements in accordance with applicable laws and regulations. Company law requires the Directors to prepare financial statements for each financial year. Under that law the Directors have elected to prepare the financial statements in accordance with United Kingdom Generally Accepted Accounting Practice (United Kingdom Accounting Standards and applicable law). The financial statements are required by law to give a true and fair view of the state of affairs of the company and of the profit or loss of the company for that period.

In preparing these financial statements, the Directors are required to:

- Select suitable accounting policies and then apply them consistently;
- Make judgements and estimates that are reasonable and prudent; and
- Prepare the Financial Statements on the going concern basis, unless it is inappropriate to presume that the company will continue in business.

The Directors are responsible for keeping proper accounting records that disclose with reasonable accuracy at any time the financial position of the company and enable them to ensure that the financial statements comply with the Companies (Jersey) Law 1991. They are also responsible for safeguarding the assets of the company and hence for taking reasonable steps for the prevention and detection of fraud and other irregularities.

The Directors also approve the Directors' Report.

GOING CONCERN

Taking into account the possible effects on the charity from Covid-19, the Directors are still confident that the charity will be able to continue as a going concern for the foreseeable future.

ON BEHALF OF THE BOARD

Brian Frith

Chairman, Macmillan Jersey

INDEPENDENT CHARTERED ACCOUNTANTS' REVIEW REPORT TO THE DIRECTORS OF MACMILLAN CANCER SUPPORT (JERSEY) LIMITED

We have reviewed the financial statements of Macmillan Cancer Support (Jersey) Limited for the year ended 31 December 2019 set out on pages 10 to 22. The financial reporting framework that has been applied in their preparation is applicable law and United Kingdom Accounting Standards (United Kingdom Generally Accepted Accounting Practice).

Directors' Responsibility for the Financial Statements

As explained more fully in the Directors' Responsibilities Statement, in the Directors' Report on page 2, the directors are responsible for the preparation of the financial statements and for being satisfied that they give a true and fair view.

Accountants' Responsibility

Our responsibility is to express a conclusion on the financial statements. We conducted our review in accordance with International Standard on Review Engagements (ISRE) 2400 (Revised) *Engagements to review historical financial statements* and ICAEW technical release TECH 09/13AAF (Revised) *Assurance review engagements on historical financial statements*. ISRE 2400 (Revised) requires us to conclude whether anything has come to our attention that causes us to believe that the financial statements, taken as a whole, are not prepared, in all material respects, in accordance with Financial Reporting Standard 102, the Financial Reporting Standard applicable in the UK and the Republic of Ireland. ISRE 2400 (Revised) also requires us to comply with the ICAEW Code of Ethics.

Scope of the Assurance Review

A review of financial statements in accordance with ISRE 2400 (Revised) is a limited assurance engagement. We have performed procedures, primarily consisting of making enquiries of management and others within the entity, as appropriate, applying analytical procedures, and evaluating the evidence obtained. The procedures performed in a review are substantially less than those performed in an audit conducted in accordance with International Standards on Auditing (UK). Accordingly, we do not express an audit opinion on these financial statements.

Conclusion

Based on our review, nothing has come to our attention that causes us to believe that the financial statements have not been prepared:

- so as to give a true and fair view of the state of the company's affairs as at 31 December 2019, and of its surplus for the year then ended;
- in accordance with the requirements of the Statement of Recommended Practice applicable to charities preparing their accounts in accordance with the Financial Reporting Standard applicable in the UK and the Republic of Ireland (FRS 102) (effective 1 January 2019).; and
- in accordance with the requirements of the Companies (Jersey) Law 1991.

Use of our report

This report is made solely to the company's directors, as a body, in accordance with the terms of our engagement letter dated 18 October 2017. Our review work has been undertaken so that we may state to the company's directors those matters we have agreed to state to them in a reviewer's report and for no other purpose. To the fullest extent permitted by law, we do not accept or assume responsibility to anyone other than the company and the company's directors as a body, for our review work, for this report, or for the opinions we have formed.



ROSSCOT
Chartered Accountants
Thomas Edge House
Tunnell Street
St. Helier
Jersey JE2 4LU

Date: 22 June 2020

FINANCIAL STATEMENTS

Statement of Financial Activities (including Income and Expenditure Account)

For the year ended 31 December 2019

	Notes	2019			2018		
		Unrestrict	Restricted	Total	Unrestrict	Restricted	Total
		ed Funds	Funds	Funds	ed Funds	Funds	Funds
		£	£	£	£	£	£
Income							
Legacies, donations and grants:							
Legacies and In Memorium	3	65,263	-	65,263	8,182	-	8,182
Donations and Third Party Fundraising	4	197,231	-	197,231	118,196	-	118,196
Trusts, Grants and Foundations	5 & 19	55,144	2,000	57,144	72,267	11,557	83,824
		317,638	2,000	319,638	198,645	11,557	210,202
Income from trading activities and central events	6	197,497	-	197,497	296,672	-	296,672
Total funds raised income		515,135	2,000	517,135	495,317	11,557	506,874
Interest received		6,174	-	6,174	4,717	-	4,717
Total income		521,309	2,000	523,309	500,034	11,557	511,591
Expenditure							
Costs of raising funds	7 & 8	173,858	-	177,867	129,068	-	129,068
Expenditure on charitable activities	7	325,480	32,025	353,496	279,668	3,359	283,027
Total expenditure		499,338	32,025	531,363	408,736	3,359	412,095
Net income		21,971	(30,025)	(8,054)	91,298	8,198	99,496
Reconciliation of funds							
Total funds brought forward		634,248	39,994	674,242	542,950	31,796	574,746
Total funds carried forward		656,219	9,969	666,188	634,248	39,994	674,242

These financial statements are unaudited.

The notes on pages 25 to 32 form part of these financial statements.

BALANCE SHEET

As at 31 December 2019

	Notes	2019		2018	
		£	£	£	£
Fixed Assets					
Tangible assets	14		114,536		26,895
Current assets					
Debtors	15	23,412		14,328	
Cash at bank and in hand	16	578,952		661,589	
			<u>602,364</u>		<u>675,917</u>
Liabilities					
one year					
Other Creditors and Accruals	13 & 17	48,712		22,855	
Net current assets					
			553,652		653,062
one year					
Deferred Income	13 & 17		-		5,715
Long-term Liability	17 & 19		2,000		
Net Assets					
			<u>666,188</u>		<u>674,242</u>
The funds of the charity					
Restricted income funds	20		9,969		39,994
Unrestricted funds			656,219		634,248
Total funds of the charity					
			<u>666,188</u>		<u>674,242</u>

These financial statements were approved by the Board of Directors on 18th May 2020 and signed on their behalf by:

Brian Frith

Director - Chairman

Michelle Fielding

Finance Director

STATEMENT OF CASH FLOWS

As at 31 December 2019

Reconciliation of net cash provided by/(used in) Operating Activities	2019	2018
	£	£
Net surplus/deficit for the reporting period (as per the Statement of Activities)	(8,054)	99,496
Adjustments for:		
Depreciation charges	23,355	10,975
Investment income	(6,174)	(4,717)
Change in debtors	(9,084)	(3,301)
Change in creditors	22,142	(15,828)
Cash flows from operating activities	22,185	86,625
Cash flows from investing activities:		
Purchase of plant and equipment	(110,996)	(2,430)
Interest received	6,174	4,717
Net cash used in investing activities	(104,822)	2,287
Change in cash and cash equivalents in the reporting period	(82,637)	88,912
Cash and cash equivalents at the beginning of the reporting period	661,589	572,677
Change in cash and cash equivalents	(82,637)	88,912
Cash and cash equivalents at the end of the period	578,952	661,589

NOTES TO THE FINANCIAL STATEMENT

For the Year ended 31 December 2019

1 Accounting Policies

1.1 Basis of Preparation of Financial Statements

The Financial Statements have been prepared under the historical cost convention and in accordance with applicable accounting standards in the United Kingdom, the Statement of Recommended Practice (SORP) 'Accounting and Reporting by Charities 2019', Financial Reporting Standard (FRS) 102 and the Companies (Jersey) Law 1991.

Macmillan Cancer Support (Jersey) Limited meets the definition of a public benefit entity under FRS 102. Assets and liabilities are initially recognised at historical cost or transaction value unless otherwise stated in the relevant accounting policy note(s).

1.2 Going concern

The charity reported a net cash outflow of £82,637 for the year. The Directors are of the view that there are no material uncertainties regarding the charity's ability to continue in operation. The Directors are confident that the charity will continue as a going concern for the foreseeable future.

The charity's functional and presentation currency is GBP.

The following principal accounting policies have been applied:-

Income and other expenses

Income arising from donations and fundraising is accounted for when received.

Bank interest and other immaterial expenses are accounted for on a receipts and payments basis. For legacies, entitlement is taken on a case by case basis as the earlier of the date on which:

1. the date that probate has been granted (provided that notification has been made by the executor(s) to the Charity that a distribution is expected, or
2. when a distribution is received from the estate.

Grant income received

Grant income is recognised as income over the period for which it is intended. Deferred income from grants is disclosed between current and non-current liabilities.

Depreciation

Depreciation is provided so as to allocate the cost of assets less their residual value over their estimated useful lives, on a straight line basis over the period of their estimated useful life as follows:

Computers	5 years
Leasehold Alterations - The Oasis (based on remaining term of lease)	7 years
Leasehold Alterations - The Lounge (based on term of lease)	9 years
Office equipment	10 years
Fixtures & Fittings	10 years

Debtors

Debtors are recognised at the settlement amount due after any trade discount offered. Prepayments are valued at the amount prepaid net of any trade discounts due.

Cash at Bank and in hand

Cash at Bank and cash in hand includes cash and short term highly liquid investments with a short maturity of three months or less from the date of acquisition or opening of the deposit or similar account.

Creditors and provisions

Creditors and provisions are recognised where the charity has a present obligation resulting from a past event that will probably result in the transfer of funds to a third party and the amount due to settle the obligation can be measured or estimated reliably. Creditors and provisions are normally recognised at their settlement amount after allowing for any trade discounts due.

Operating Leases

Incentives of rent-free periods were received to enter into an operating lease and are credited to the Income and Expenditure Account, to reduce the lease expense, on a straight-line basis over the period of the lease.

Financial Instruments

The charity only has financial assets and financial liabilities of a kind that qualify as basic financial instruments. Basic financial instruments are initially recognised at transaction value and subsequently measured at their settlement value.

2 Legal Status of the charity

The Company is incorporated as a private company limited by guarantee in Jersey under the Companies (Jersey) Law 1991 with company number 104090 and does not have a share capital. The guarantors as set out in the Memorandum of Association and their liability in the event of the company being liquidated are:

	Sum Guaranteed
Brian Frith	£1.00
Lauren Perchard Rees	£1.00

It is a registered charity with charity no. 58 and Association of Jersey Charities membership no. 355. Its registered office is Suite 2.13, The Lido Medical Centre, St. Saviour's Road, St. Saviour, Jersey JE2 7LA. Its principal activity is the provision of high quality information, support and practical advice to anyone affected by cancer.

3 Legacies and In Memorium

	2019	2018
	£	£
Legacies	62,998	500
In memorium	2,265	7,682
	<u>65,263</u>	<u>8,182</u>

In 2019 the charity received three legacies, one of which was for £58,769 whereas in 2018 only one legacy was received for £500. All legacy income was unrestricted both in this year and the prior year.

4 Donations and third party fund raising

	2019	2018
	£	£
	Unrestricted	Unrestricted
General	<u>197,231</u>	<u>118,196</u>

£4,013 of income reported in 2018 as "Support Group" has been categorised to general income in these financial statements.

5 Trusts, grants and foundations

	2019	2019	2018	2018
	£	£	£	£
	Unrestrict ed	Restrict ed	Unrestrict ed	Restrict ed
Trusts, grants and foundations	41,461	9,969	38,116	39,994
Deferred grants re leasehold alterations	5,714	-	5,714	-
	<u>47,175</u>	<u>9,969</u>	<u>43,830</u>	<u>39,994</u>

6 Income from trading activities and central events

	2019	2018
	£	£
	Unrestrict ed	Unrestrict ed
Central events - (see below)	177,282	296,436
Merchandising	-	236
The Lounge (see page 16)	20,215	-
	<u>197,497</u>	<u>296,672</u>

6 Income from trading activities and central events (continued)

Analysis of Central Events:

	<u>2019</u>	<u>2019</u>	<u>2019</u>	<u>2018</u>	<u>2018</u>	<u>2018</u>
	£	£	£	£	£	£
	Gross Receipts	Related Expenditure	Net Receipts	Gross Receipts	Related Expenditure	Net Receipts
Coffee Morning	40,974	4,891	36,083	49,190	6,188	43,002
Golf Day	29,427	11,044	18,383	18,587	4,863	13,724
Cycle Challenge	-	169	- 169	185,942	22,290	163,652
Rowathon	44,013	3,272	40,741	42,627	3,865	38,762
Trek to Freedom	44,573	20,832	23,741			
Car Raffle	18,295	9,218	9,077			
Yogathon	-	-	-	90	-	90
	<u>177,282</u>	<u>49,426</u>	<u>127,856</u>	<u>296,436</u>	<u>37,206</u>	<u>259,230</u>

The Lounge	<u>2019</u>	<u>2018</u>
	£	£
Income from Sale of Goods	<u>20,215</u>	<u>Nil</u>
Cost of Buying in Goods	<u>12,034</u>	<u>Nil</u>
Staff Costs	<u>21,206</u>	<u>Nil</u>
Property Costs	<u>12,541</u>	<u>Nil</u>
Other Costs	<u>1,718</u>	<u>Nil</u>
Total Expenditure	<u>47,499</u>	<u>Nil</u>
Net loss arising from The Lounge	<u>(27,284)</u>	<u>Nil</u>

The Lounge is a café and second hand bookshop located at 26 Burrard Street, St. Helier, Jersey which was opened in July 2019.

7 Expenditure

7a

	Direct staff costs	Central Events Costs	Apportioned support costs	<u>2019</u>	<u>2018</u>
	£	£	£	£	£
Expenditure on charitable activities	251,798	-	101,698	353,496	283,027
Expenditure on raising funds - see Note 7	75,117	49,426	53,324	177,867	129,068
	<u>326,915</u>	<u>49,426</u>	<u>155,022</u>	<u>531,363</u>	<u>412,095</u>

Other direct costs associated with raising funds include direct event and campaign costs, marketing and advertising.

Expenditure cont.

7b

Analysis of apportioned support costs

	Governance £	Facilities and Other Expenditure £	Information technology £	Finance, legal and secretarial £	2019 £	2018 £
Charitable	8,730	87,765	4,896	307	101,698	91,610
Fundraising	-	50,619	1,619	1,085	53,323	17,324
	<u>8,730</u>	<u>138,384</u>	<u>6,515</u>	<u>1,392</u>	<u>155,021</u>	<u>108,934</u>

Support costs, including staff costs, were apportioned on a basis agreed by the directors. Governance costs are apportioned on the same basis.

7c

Analysis of governance costs

	2019 £	2018 £
Assurance Report Fee	4,500	4,500
Legal and Professional fees	4,230	5,993
	<u>8,730</u>	<u>10,493</u>

7d

Analysis of facilities and other expenditure

Analysis of facilities and other expenditure	2019 £	2018 £
Lido Centre		
Repairs & Renewals	-	95
Office Cleaning	3,129	2,852
Rent	33,697	30,184
Utilities & Rates	2,581	2,251
Sundry Kitchen Supplies	675	490
	<u>40,082</u>	<u>35,872</u>
Fundraising/Burrard Street		
Repairs & Renewals	-	47
Office Cleaning	778	1,426
Rent	16,733	10,061
Utilities & Rates	750	1,126
Sundry Kitchen Supplies	100	245
	<u>18,361</u>	<u>12,905</u>

Analysis of facilities and other expenditure cont.

	2019 £	2018 £
The Lounge		
Repairs & Renewals	44	-
Rent	10,185	-
Utilities & Rates	836	-
Coffee Shop Purchases	12,034	-
	<u>23,099</u>	<u>-</u>
Advertising and Marketing	8,498	149
Design	601	1,057
Books/CDs	-	8
Complementary Therapy Services	213	251
Wellbeing Services	5,054	1,840
Funding of Urotherapy Post	-	8,000
Networking and Education	229	3,359
Travel expenses	2,017	2,941
Office supplies	1,521	1,865
Training	1,248	1,736
Depreciation	23,355	10,975
Entertaining	1,117	701
Postage and Printing	5,540	4,835
Outreach	4,076	-
Support Group - Expenses	-	3,522
Sundry Expenses/Subscriptions	395	293
Insurance	2,978	999
	<u>56,842</u>	<u>42,531</u>
	<u>138,384</u>	<u>91,308</u>

7e

Analysis of information technology

IT services	3,322	1,560
Website Development	680	920
Telephone and internet	2,513	3,079
	<u>6,515</u>	<u>5,559</u>

7f

Analysis of finance, legal and secretarial

Bank and other charges	1,394	1,574
------------------------	-------	-------

8 Expenditure on raising funds

	2019 £	2018 £
Expenditure on raising funds		
Direct Staff Costs	75,117	74,538
Central Events Costs	49,426	37,206
Apportioned Support Costs	53,324	17,324
	<u>177,867</u>	<u>129,068</u>

9 Analysis of Staff Costs

	<u>2019</u>	<u>2018</u>
	£	£
Charitable Activities (including Social Security)	251,798	176,289
Fundraising (including Social Security)	75,117	74,538
Social Security	-	15,128
	<u>326,915</u>	<u>265,955</u>

There is no provision for Occupational Pension or Occupational Medical scheme. However, in January each year the Charity may make a discretionary payment of up to 10% of a staff member's annual salary, subject to them meeting their personal development review objectives. The key management personnel of the charity is the Chief Executive Officer.

10 Staff Numbers

The total number of part-time and full-time staff employed during 2019 was 8 compared to 6 full-time equivalent in 2018. There was only one member of staff earning over £60,000 during the year.

11 Related Party Transactions

There have been no related party transactions during the accounting period.

12 Donated services

Donated services and facilities are valued and included as income and expenditure at the price that Macmillan Jersey estimates it would pay in the open market for an equivalent service or facility. In 2019, a charge and related donation of £409 has been included for the insurance provided by Islands Insurance, £1,324 was not charged for the insurance on The Lounge by the Landlord and £4,500 being the discounted charge for assurance services provided by Rosscot, £2,000 of which being a donation.

13 Grants received for refurbishment

During 2014, two grants were received each for a value of £20,000 totalling grant income for the year of £40,000. Both grants were provided to cover costs in relation to the alterations to the leasehold premises which the charity occupies. The total of £40,000 is being recognised as income over the remaining 7 years of the lease period, in line with the amortisation policy on leasehold alterations.

Deferred income from these grants has been split and recognised as current and non-current liabilities on the Balance Sheet.

14 Tangible assets

	Leasehold Alterations - The Oasis	Leasehold Alterations - The Lounge	Fixtures & Fittings	Office Equipment	Computers	Total
Cost	£	£	£	£	£	£
At 1 January 2019	43,560	-	17,887	22,584	3,524	87,555
Additions in year	-	110,463	-	-	533	110,996
Sold in year	-	-	-	-	-	-
At 31 December 2019	<u>43,560</u>	<u>110,463</u>	<u>17,887</u>	<u>22,584</u>	<u>4,057</u>	<u>198,551</u>

Depreciation

At 1 January 2019	31,115	-	14,714	13,702	1,129	60,660
Charge for the year	6,223	12,274	1,789	2,258	811	23,355
At 31 December 2019	<u>37,338</u>	<u>12,274</u>	<u>16,503</u>	<u>15,960</u>	<u>1,940</u>	<u>84,015</u>
Net Book Value as at 31 Dec 2019	<u>6,222</u>	<u>98,189</u>	<u>1,384</u>	<u>6,624</u>	<u>2,117</u>	<u>114,536</u>
Net Book Value as at 31 Dec 2018	<u>12,445</u>	<u>-</u>	<u>3,173</u>	<u>8,882</u>	<u>2,395</u>	<u>26,895</u>

Leasehold alterations - The Oasis relates to premises at Lido Medical Centre, St. Saviour known as "The Oasis".

Leasehold alterations - The Lounge relates to premises at 26 Burrard Street, St. Helier known as "The Lounge".

15 Debtors

	<u>2019</u>	<u>2018</u>
	£	£
Trade debtors	788	1,321
GST recoverable	10,297	2,265
Prepayments	12,327	10,742
	<u>23,412</u>	<u>14,328</u>

16 Cash at Bank and in hand

	<u>2019</u>	<u>2018</u>
	£	£
Cash at Bank and in hand	63,279	120,059
Notice Deposits	515,673	541,530
	<u>578,952</u>	<u>661,589</u>

There is no overdraft facility

17 Creditors

Creditors	2019	2018
	£	£
Taxation and Social Security	11,151	7,684
Rent-free period	20,370	-
Sponsorship in advance	10,001	-
Trade Creditors	1,476	9,457
Deferred Income due within one year	5,714	5,714
	<u>48,712</u>	<u>22,855</u>
Deferred Income due after one year	-	5,715
Long-term Liability - ABC	2,000	
	<u>50,712</u>	<u>28,570</u>

Deferred income is in respect of grants disclosed in note 12.

On 1st February 2019 the charity entered into a lease for premises at 26 Burrard Street, St. Helier, Jersey for a term of nine years expiring on 31st January 2028. Under this Agreement, the landlord granted the charity an initial rent-free period of one year. Under accounting rules, the value of this rent-free period is regarded as an incentive for agreeing to the Lease and its value is amortised equally over the period of the Lease (9 years). An amount of £20,370 (2018: £nil) was credited against rent expenses in the Income and Expenditure Account for this item in the year.

18 Remuneration of Directors

Directors receive no remuneration for their time and can claim only documented expenses incurred in carrying out their duties in line with the Expenses Policy.

19 Restricted Funds

During 2019 the After Breast Cancer charity "ABC" donated £2,000 to be used to host Nicola Jane events (post breast cancer surgery). The funds received from the Jersey Association of Cancer Nurses in 2018 now amount to £7,969 and will be used for networking and education purposes. The remaining funds of £31,796 to be used for Outreach were used to pay for some of the refurbishment of The Lounge.

	b/f	Income	Expenditure	c/f
	£	£	£	£
Outreach	31,796	-	31,796	-
Cancer Nurses	8,198	-	229	7,969
ABC	-	2,000	-	2,000
	<u>39,994</u>	<u>2,000</u>	<u>32,025</u>	<u>9,969</u>

20 Designated Funds

There are three amounts of designated funds. A dietician is being funded by Macmillan UK with Macmillan Jersey having agreed to pay £49,435 over a three year period by way of a partner contribution. An amount of £3,600 has been set aside for Prostate Cancer Rehabilitation Classes and £6,000 is to be used for professional group support which will be delivered by external providers.

21 Rental of Premises

The charity occupies Suite 2.13 at the Lido Medical Centre. A nine year lease effective from 13th October 2012 with a current annual rent of £36,586 reviewable in August 2020 on the basis of the Jersey Retail Price Index. The charity also rents 26 Burrard Street for The Lounge and the Fundraising Department. It is a nine year lease effective from 1st February 2019 with a one year rent-free period. The current rent is £25,000 p.a. and is subject to review in January 2022 and 2025 on the basis of the Jersey Retail Price Index.

Commitments under Operating Leases

At 31 December 2019 the Charity had future minimum lease payments under non-cancellable operating leases as follows:

Payment Due	2019	2018
	£	£
Not later than one year	58,828	33,828
Later than one year and not later than five years	158,828	67,656
Later than five years	50,000	
	<u>267,656</u>	<u>101,484</u>

22 Events after the Reporting Period

Following the global outbreak of Covid-19, there has been a significant impact on the value of investments worldwide, however, the charity's assets have not been unduly affected as its funds are held in cash deposits. The income of the charity in 2020 is likely to be considerably reduced due to the postponement and cancellation of events organised by both the charity and individual fundraisers. Both The Oasis and The Lounge have had to close due to the lockdown restrictions so there will also be a loss of income from The Lounge. The charity will apply for grants from the States of Jersey to assist with the payment of wages. Despite this, the charity is confident that it has sufficient reserves to enable it to continue with its work.

OFFICERS AND PROFESSIONAL ADVISORS

REGISTRATION	Jersey, Channel Islands		
REGISTRATION NUMBER	104090 - incorporated on 25th September 2009		
DIRECTORS		Appointed	Resigned
	Brian Frith	02/10/2009	
	Michelle Fielding	02/10/2009	
	Michael Bellamy	30/11/2010	
	Andrew Smith	30/11/2010	
	Sivasithamparam Himayakanthan	26/10/2013	
	Edmond Murphy	18/08/2015	04/02/2020
	Lisa Kendrick	02/04/2016	
	Catherine Gasston	19/10/2017	05/02/2020
	Janice Kearsey	09/03/2018	
	Christopher Scally	02/03/2020	
	Catherine Cooke	18/05/2020	
COMPANY SECRETARY	Janice Kearsey	09/03/2018	
ASSISTANT SECRETARY	Jean-Marie Gavey	12/08/2019	
	Monique Kinnard	23/07/2018	29/04/2019
REGISTERED OFFICE	Suite 2.13 The Lido Medical Centre St. Saviour's Road St. Saviour Jersey JE2 7LA		
ACCOUNTANTS	Rosscot Thomas Edge House Tunnell Street St. Helier Jersey JE2 4LU		
BANKERS	NatWest 16 Library Place St. Helier Jersey JE4 8NH	Investec One The Esplanade St. Helier Jersey JE2 3QA	HSBC 27 Halkett Street St. Helier Jersey JE4 8NJ
LEGAL ADVISORS	Voisin Law 37 Esplanade St. Helier Jersey JE1 1AW		

IMPACT OF COVID-19

Like many local charities, we have been hugely affected by Covid-19. Our income is forecast to reduce by a very significant 65%. Our annual expenditure will not change significantly. As a result of this we have had to make some changes to the way we work. Our annual report is an example of one of these changes. This year we have created our annual report in-house, with various staff contributing. We have very kindly been donated some of the images by Callum Thorne who recently filmed a "JT presents" video for the charity.

Below is our advertisement in local press, informing the public of changes to operations, due to COVID-19



Cancer is not the forgotten 'C' during the Covid-19 pandemic. Our cancer support team are still here for you, and can help with:

- Providing emotional support from day one of diagnosis
- Any practical advice you may need
- A weekly social 'check in' call to help you feel less alone during isolation
- Access to Macmillan financial grants and signposting to other financial grant providers
- Virtual exercise and relaxation classes
- Bereavement support for families affected by cancer and COVID-19

CALL: 498188

Monday to Friday - 10am to 4pm

or visit the 'get in touch' page on our website:

www.macmillanjersey.com

DID CANCER GO AWAY?

Cancer didn't go away when Covid hit our shore.
It took the problems there before and added many more.
Appointments cancelled, stuck at home, but what is surely missed
are friends and family, coffees, chats and being hugged and
kissed.

Can Macmillan help you, help you talk things through?
We've Counsellors and listening ears (for friends and family too).
Complex problems, simple ones or simply feeling blue,
Macmillan Jersey's ears and hearts are always here for you.

Please just grab a 'phone and call, whatever's on your mind.
You'll find us understanding, knowledgeable, kind.
We know just where to go for what and where's the best solution.
We'll take some worry from your shoulders, look for resolution.

We've nurses at the hospital, a dietician too.
Counsellors, trained Volunteers, whose role is helping you.
We can't make cancer go away, but don't face it alone
Think of what is troubling you pick up the 'phone.

Brian Frith

Chairman - Macmillan Jersey

BOARD OF DIRECTORS

As of May 2020



Chairman

Mr Brian Frith



Finance Director

Mrs Michelle Fielding



**Company Secretary/
Director of Governance**

Mrs Janice Kearsey



**Director of Fundraising
and Strategy**

Mr Andy Smith



Director/GP

Dr Michael Bellamy



Director/Oncologist

Dr Siva Himayakanthan



**Director of
Sustainability**

Dr Catherine Cooke



Director of HR

Miss Shelley Kendrick



Director

Chris Scally

Macmillan Cancer Support,
UK

CONTACT US

The Oasis

The Oasis, Suite 2.13
The Lido Medical Centre
St Saviour's Road
St Saviour
Jersey JE2 7LA
Tel: 498188

Lauren Perchard-Rees

Chief Executive
LPerchardRees@macmillanjersey.com

Pam Aubert

Centre Manager
paubert@macmillanjersey.com

Kate Fitzpatrick

Cancer support & wellbeing practitioner
Kate@macmillanjersey.com

The Lounge

26 Burrard St
St Helier
Jersey JE2 4WS
Tel: 498189

Steph Gibaut

Head of Operations & Fundraising
sgibaut@macmillanjersey.com

Kevin Alway

The Lounge Manager
Kevin@macmillanjersey.com

Sandra Silva

Café Assistant
sandra@macmillanjersey.com