



Annual Report 2021

MACMILLAN
CANCER SUPPORT
JERSEY

Annual Report & Accounts 2021

Our Year at a glance

A welcome from our Chairman	1
A message from our Chief Executive Officer	3
Strategic update	4
Strapline, vision and mission	5
The difference we made	6

Strategic Report

Service user story	7
The Oasis	8
The Oasis in numbers	9
Reflections of our Cancer Support and Wellbeing Practitioner	10
Highlights	11
Service user stories	12
Our financial year at a glance	13
Our income	14
Our Fundraisers	15
Partners	16
The Lounge	17

Governance

About us	18
Directors, Structure, Governance and Management	20
Our Team	21
Our Board	22
Volunteers	23
Fundraising and Financial Review	24
Financial Report	27
Financial Statements	28
Notes to the financial statements	31
Officers and Professional Advisors	38

A Welcome from our Chairman



Paul Savery

Throughout another year of Covid impact, the Macmillan Jersey team never once lost sight of our key objective; supporting all those in Jersey impacted by cancer.

As I reflect on the performance of the charity across 2021, I feel a genuine sense of awe for the capability of our teams to deliver such quality services in times of intense challenge and uncertainty.

This was only possible as a result of the incredibly positive mindset demonstrated by our employees and volunteers alike, and an ability to be truly agile. A great example being the delivery of a wonderful Cycle Challenge, which finally took place on a different date and indeed a different country! That it took place at all is testament to the agility of the team and their commitment to find a way; that the event was such a success for those partaking and for our charity in raising £180,000, a credit to the teams tenacity and of course the strength of support we receive from the island community.

Sadly, the rate of cancer diagnosis is likely to rise as life returns to normal(ish) following society's response to Covid. As such the demand for our services will increase, and continually test our abilities:

- in terms of our capacity; there is no doubt in my mind that we will continually be looking for more volunteers to join and support us in delivering the services. I am always overwhelmed by the sheer number of people I talk to away from my charity role, who offer to volunteer their time for Macmillan Jersey. I'm sure this is a test we will pass with flying colours.
- from a financial perspective; our charity requires significant funding each year, much of which is currently non-repeat and therefore uncertain at the start of each financial year. 2021 was a challenging year for many sectors and that is certainly true of the Charitable sector. With the UK and Europe hovering on the edge of recession, and disposable incomes of so many in Jersey under heightened pressure, 2022 looks no easier.
- to not come up short given too many depend upon us finding a way to finance our services. We are focused on generating a far broader base of regular givers, to provide a more secure starting point to each financial year. We have rolled out a new website, which has made it very simple for anyone to set themselves up as a regular giver. We are seeing early signs of success, and the theme continues at our Lounge, where those donating are recognised in our 'Click for a brick' campaign.

- to help shape the conversation about cancer care in Jersey. We are committed to playing a leading role in building something that works better for those impacted by cancer across our island. We have implemented some changes to the leadership structure, which provides a focus on building upon some key relationships established with Health and beyond. We also welcomed two new Directors to the Board, Danielle Pearce (Marketing) and Tina Stuchfield (HR). I'm absolutely confident that we have strength in depth, and are well placed to pursue our key objectives.

In summary, and going back to the top of this update, I am in awe of the incredible impact that those who work or volunteer for Macmillan Jersey have delivered throughout 2021. Their dedication, agility and tenacity have helped us navigate some very challenging times. I'm grateful to each and every one of you.

I am of course also deeply indebted to those in the community who have supported Macmillan Jersey throughout the year; be that through a sizable donation, spending money at The Lounge, setting up as a regular giver, generating sponsorship for a Macmillan Jersey event, or contributing through one of the range of activities and partnerships we offer. Each and every pound counts and goes directly towards supporting all those impacted by cancer in our island.

I'm privileged to work alongside so many inspirational people at Macmillan Jersey, who care deeply for the charity, what it does and plans to do.

Thank you.

A handwritten signature in blue ink, consisting of a series of loops and a long horizontal stroke extending to the right.

Paul Savery - Chairman

A message from our Chief Executive Officer



Stephanie Gibaut

Like so many, 2021 continued to create challenges for us as a charity, the environments we deliver our services in and of course the people we support. As an organisation, our services were needed more than ever, as guidance was in place to encourage those at high risk to shield and socially distance once again. As a small team, we continued to adapt our services to ensure we could reach all those in the community that needed us and continue our mission of supporting people affected by cancer in Jersey.

Despite the challenges we faced in the early part of 2021, our adapted services through home visits, phone support and the creation of our new website resulted in our incredible service team providing 3534 support sessions to those affected by cancer in Jersey. We were extremely grateful to JT for providing a free of charge service for our phone support sessions and to the Jersey Community Foundation for providing a grant to enable our community support project.

For the second year running, our fundraising endeavors looked to be at an all-time low. However, as we entered the latter part of the year, our small but determined fundraising team managed to organise a cycle challenge from Lyon to Marseille. This challenge was originally planned for 2020 and going from Bologna to Rome. This determination resulted in an additional £180,000 for the charity. A huge thank you must go to the 43 cyclists, logistics crew and our sponsor Investec for making this possible.

Our support sessions increased by over 30% in 2021 and with capacity running low in our team, we introduced two new roles. We welcomed a cancer support worker and partnered with Health and Community Services to introduce a Macmillan Radiotherapy Support Specialist. Both these roles will continue into 2022 and the future as we look to expand our service offering on island.

Another year highlighted the incredible support we receive from Volunteers in the community. Their time and passion is invaluable and we truly couldn't deliver the level of service we do without them. Our volunteers range from Cancer support to our Board of Directors. In 2021, our volunteers provided 145 days of service to the charity. This equates to 3500 kindness hours. Their time is so precious to us and we are forever grateful.

Currently cancer cases in Jersey are reported at around 600 per year, however with people living longer, this is likely to grow in the coming years, with cancer projections in Jersey set to increase by 40% by 2037. Although this is a daunting figure, we also know that survival rates have increased and will continue to do so. Our services are needed more than ever before and we as an organisation are committed to ensuring islanders affected by cancer are at the heart of any future plans.

The last two years have filled our organisation with determination and passion. Through challenge, comes opportunity. Together, we have worked as one team to ensure we can support those islanders affected by cancer in the best way possible. I would like to take this opportunity to thank our wonderful team for having such a positive impact on our local community and doing whatever it takes to ensure our services continued. Without their drive and commitment, none of this would have been possible. Thank you!

And to all those that supported us in 2021, whether it was financial, time or awareness, we are eternally grateful.

A handwritten signature in black ink, appearing to read "S. Gibaut".

Stephanie Gibaut



Strategic update

In March 2021, Our Senior Management Team and Board of Directors created what is now our five year strategy. This strategy was supported in earlier meetings by our Macmillan Jersey team of employees, volunteers and stakeholders. Outcomes of the day included a new and refreshed Vision and Mission statement with some clear aspirations and objectives.

Now in 2022, we focus our attention on getting one step closer to our vision, to support everyone affected by cancer in Jersey. Our five key objectives in addition to our business as usual for the year ahead include:

- Increase the amount of men receiving cancer support services. Jersey cancer statistics indicate that more men are being diagnosed each year, yet only 11% of our support sessions in 2021 were men.
- Continue our partnership with the Government of Jersey to support any islanders going off island for Radiotherapy treatment. This service was privately funded in 2021, and we aim to secure another 12 months worth of funding for this Radiotherapy support specialist role.
- Introduce Holistic Needs Assessments in partnership with the Government of Jersey to become part of every patients cancer care journey. This project will require 12 months funding so strive to achieve this in advance of the project being approved.
- Grow our Regular Giving income to ensure some financial sustainability.
- Begin to explore future homes for Macmillan Jersey. We currently rent our cancer support and wellbeing centre and would like to have an owned property in the future.



Strapline

'Here for you, supporting you through'

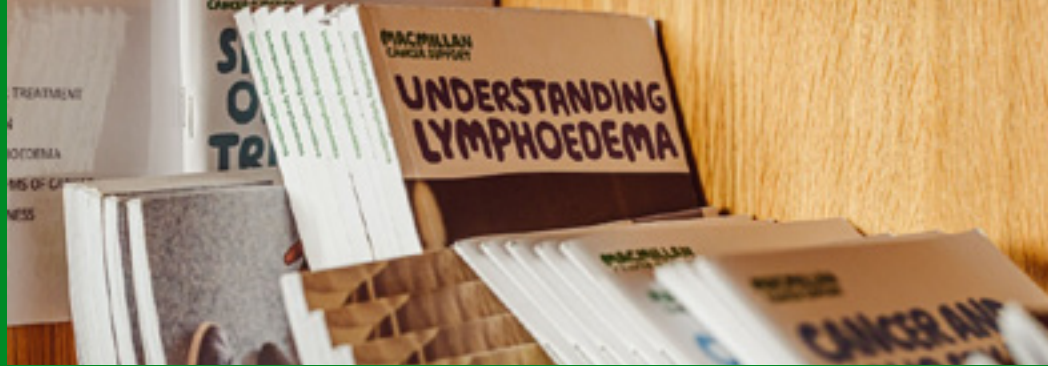
Vision

Everybody affected by cancer in Jersey will have access to emotional, practical and wellbeing support, through their preferred route of contact.

Support will be delivered in a way that meets people's individual needs from diagnosis and beyond, and from whichever source is best placed.

Mission

To play a key role in supporting people affected by cancer and their loved ones, whilst helping to shape the island's strategy for cancer care.



The Difference We Made

In 2021, our team of trained professionals and volunteers provided 3,534 support sessions to people affected by cancer in Jersey. This support was delivered in a variety of ways. Our support ranges from emotional and practical to group and wellbeing services

2,181

Individual support sessions were provided.

948

People attended group sessions

405

Complementary Support sessions were provided.

3 HOPE

Workshops delivered to cancer patients that had finished treatment.

Of these support sessions

337

New people found our services.

202

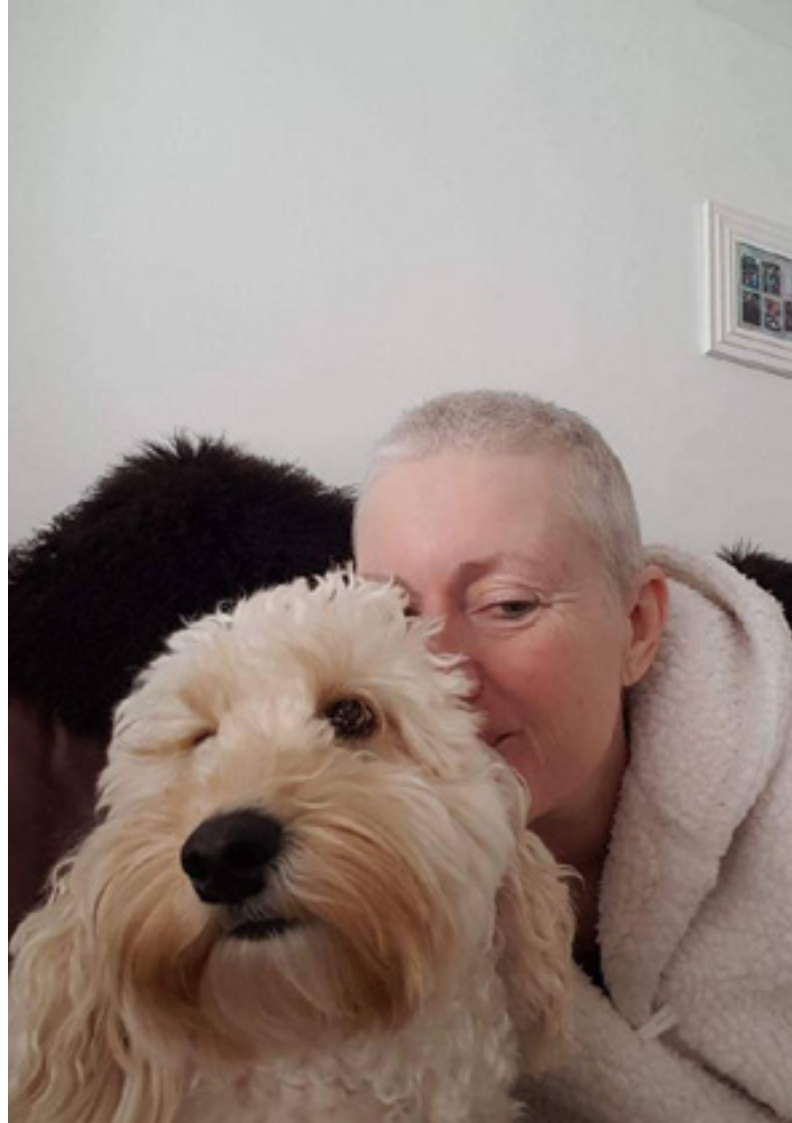
Of the new people were diagnosed in 2021

66

people were supported as part of our new service providing radiotherapy support to patients going off island for treatment

71%

Of the people we supported were the cancer patient.



Mel - Service User

Service user story

In November 2016 I was diagnosed with esophageal cancer and my whole world seemed to fall apart. Having lost my mother to breast cancer when I was only 21 years old and watched her die, I felt there was no hope for me.

I was recommended to seek support from the Macmillan Oasis Centre, so I took a deep breath and opened your door. This could not have felt better at that time, like a huge blanket was being wrapped around my shoulders.

Lola was my other lifeline who helped me through, she knew there was something wrong with me and didn't leave my side, she just brought so much comfort to me, without asking for anything in return.

I had three months of Chemotherapy followed by surgery in Southampton to have two thirds of my stomach removed, most of my esophagus and 36 lymph nodes removed.

My daughter and husband wanted to show their support to me and my cancer too, so we all had the esophageal cancer ribbon tattoo done.



The Oasis

2021 started as 2020 ended, working and adjusting to the Government of Jersey's COVID-19 restrictions. There were many challenges faced by everyone during 2021, but together the team provided 3534 support sessions to people affected by cancer with compassion and kindness in abundance which was significantly higher than the previous year.

Emotional support can be an informal conversation over a cuppa or more formal counselling while practical support could be a person accessing a Macmillan UK grant or picking up an information leaflet from our large library. Our wellbeing services includes complementary therapies like reiki and reflexology and also include yoga and Pilates. Group support included forest therapy walks, relaxation classes and a well-attended Prostate Cancer Support and HOPE support group.

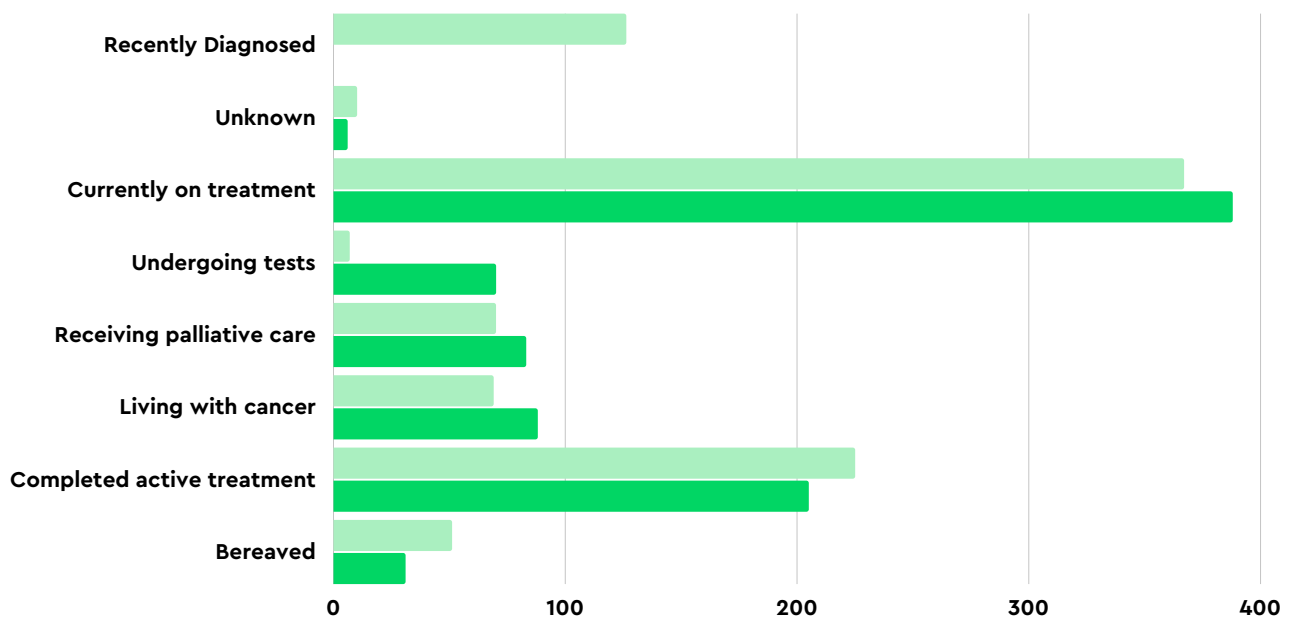
Some highlights of 2021 include re-establishing the Complementary Therapy Service, implementation of a Radiotherapy Support Service, recruitment of a Cancer Support Worker, additional volunteer recruitment and the expansion of the existing group support service.

Our annual survey hears directly from individuals using our services. Many needs were met of those who took part in the survey but it also highlighted some unmet needs. With this in mind we will be embarking on an exciting new project in 2022 called 'Improving the Cancer Journey Jersey', aimed at using a tool called a Holistic Needs Assessment to help directly support individuals needs at different times during their cancer experience.

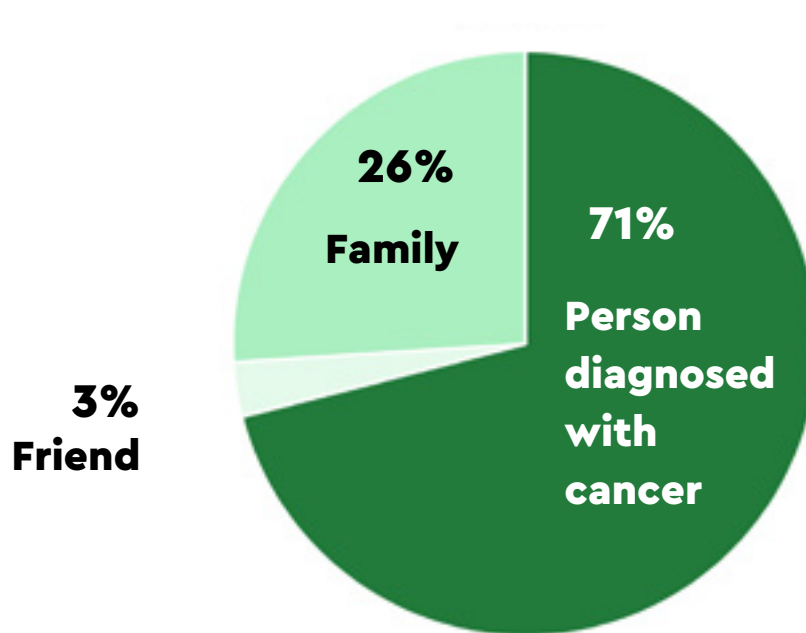
Nearly half the people who accessed Macmillan Jersey did so for emotional support. By the end of 2021 we had fully embedded home visits which had originally started off the back of the pandemic. We look ahead to next year as we develop and embed Holistic Needs Assessments into our service and evolve our service to meet the needs of people accessing it.

The Oasis in numbers

The stage in the cancer pathway of the person visiting The Oasis



The type of person accessing our services





Reflections of our Cancer Support and Wellbeing Practitioner

During early 2021 we were still dealing with the impact of Covid, this proved both challenging and distressing for patients. They had to manage having telephone consultations, delays in treatment and travelling to the UK, only to find that there was a shortage of beds and they had to return to Jersey without having their surgery/treatment.

During the summer months, we were able to return to something that felt almost normal, people were feeling more confident in coming to the Oasis, we were busy with both our drop-in and appointment service. Our complementary therapy service and our afternoon group activities were also able to resume.

Our cancer support team continued to offer community visits to service users that were unable to come to the Oasis, these visits took place in peoples homes, the general hospital and Jersey hospice we also visited palliative patients both in the general hospital and Jersey Hospice, whilst also offering bereavement support to their families and loved ones.

Our support team worked hard and felt a sense of achievement that during what was both a challenging and rewarding year we were able to provide our service users with much needed support at a time and a place that was right for them.



Highlights

During 2021 we delivered three face to face HOPE workshops with 18 people in total attending.

HOPE stands for Helping Overcome Problems Effectively. The six-week course is designed to support people, rediscover their strengths, and overcome the emotional and practical challenges of life after cancer. Participants are generous in sharing their concerns, thoughts and feelings and they get support and understanding from each other and most of all realise they are not alone. After completing the course they are invited to join the newly formed HOPE support group.

To date we have fifty hope support group members.

The support group was set up in 2021 off the back of requests from attendees.

"Doing the HOPE course was one of the best decisions I ever made. I met people that had the same thoughts and feelings about cancer as me. I was able to talk freely in a non-judgmental supportive environment. It was fun and uplifting and moved me from being a cancer patient to a cancer survivor."

Daniel - Throat Cancer



Service User Stories

"I would not have gotten through my cancer journey without the support of Macmillan Jersey. Keep up the great work. Thanks to all the team!"

"I'd like to say a very, very big thank you to all the team at The Oasis who have helped me through a most heart wrenching time in my life. I would strongly recommend anyone who is going through cancer to get in touch with The Oasis, they are there for us and give us back some of our humanity - they care! And it's good to receive the kindness."

"Always made to feel welcome, the hardest part is having the courage to come through the door."

Our financial year at a glance

We raised a total of £747,455 in 2021

Trading activities and central events

£239,063 (31%)

Donations and Third Party Fundraising

£157,722 (20%)

Legacies and In Memorium

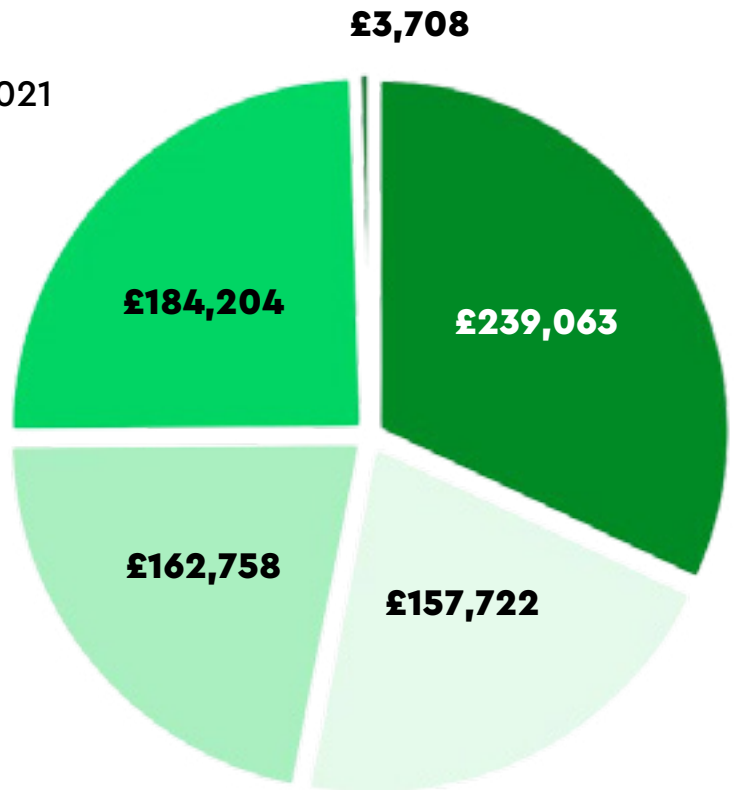
£162,758 (21%)

Trusts, Grants and Foundations

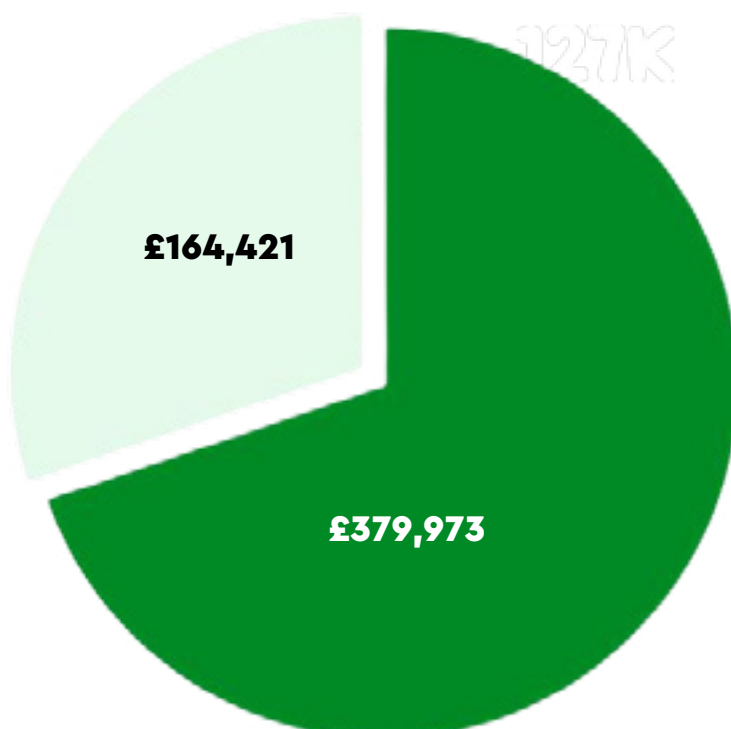
£184,204 (24%)

Interest received

£3,708 (4%)



Our Expenditure totaled £544,394



Expenditure on charitable activities

£379,973 (70%)

Costs of raising funds

£164,421 (30%)

In the last 12 months we have increased our fundraising expenditure by 2% (2020 was 28%) but still 3% reduced since 2019 (2019 was 33%)



Our Income

The total amount raised in 2021: **£747,455**



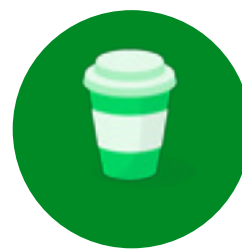
£116,015

The total amount raised by community, individual, In lieu, and regular giving



£206,840

The total amount raised by events



£32,223

The total amount raised by The Lounge, our charity book cafe



£184,204

The total amount raised by Grants and Trusts



£162,758

The total amount raised by In Memory donations



£41,707

The total amount raised by Corporate companies

*Interest received £3,708



Our Fundraisers

2021 was another fantastic year of fundraising events and donations from our incredible community. From cycle challenges to head shaves, our community pulled together once again to raise much needed funds to support people affected by cancer in Jersey. A special thank you to the Barry Burns Foundation who supported us for the second year running in memory of Barry.

Together, we are changing lives in Jersey.



Macmillan Cancer Support Jersey would like to thank its 2021 partners and grant providers for their continued support, expertise and time they offered to our charity, all for free. We would also like to thank our amazing community for all their support, in particular the Gary Burgess crowd funder and Regular Giving Awareness Campaign.

In what was another difficult year - the above companies and funders have helped ensure we can continue offering our services to anyone in Jersey affected by cancer.



The Lounge for Macmillan Jersey

At the beginning of the year, The Lounge - along with many island businesses suffered cash losses due to the continuing COVID pandemic. The team were quick to react, offering a socially distanced 'grab-and-go' offering in-line with governmental advice at the time. As the year progressed, we thankfully saw our valued customers returning sooner rather than later. We attribute this in part to our incredibly high standards of health and safety, and going above and beyond what was required to ensure everyone in our community felt as safe as possible.

We started the year by promoting local, and joining other businesses to aid with Jersey's struggling hospitality economy. Our Mac-Book challenge opened the literary door to young and returning readers alike, and was supported by world-renown local author Peter James! We moved away from our old coffee supplier, and began working with the fantastic team at Cooper & Co. who provide us with excellent coffee and incredible food too. We hosted language classes, pop-up shops and hosted cancer support drops ins. Our partners JT donated a wealth of phone accessories for us to sell - and we introduced our 'late at The Lounge' late night opening around Christmas which was a great success.

The Lounge continues to be much more than just a 'shop'. We proactively welcome other island-based charities to use our meeting spaces. We hold birthday parties, baby Showers...even hen-do's! We provide a safe space for those who wish not to be disturbed, and as always a friendly smile from our fantastic staff and volunteers awaits anyone who comes through our door.

About Us

Our Vision, Mission and Values

Our Vision at Macmillan Jersey is that everybody affected by cancer in Jersey will have access to emotional, practical and wellbeing support through their preferred route of contact. Support will be delivered in a way that meets people's individual needs from diagnosis and beyond and from whichever source is best placed to deliver this.

It is the mission of Macmillan Jersey to play a key role in supporting people affected by cancer and their loved ones, whilst helping to shape the Island's strategy for cancer care.

Our Team Values:

We are professional and welcoming

We treat everyone with kindness

We put the individual at the core of all we do

Our history

In the 1980s, Bryan Skinner, a Jersey resident and cancer patient, wrote an article concerning the lack of information and support available to patients. He connected with Vicky Clement-Jones, a research doctor and fellow cancer patient, to form Cancerbackup in the UK. After Bryan's death, his widow Celia was instrumental in establishing Cancerbackup in Jersey. Following the merger in 2008 of Cancerbackup and Macmillan, our then Chairman, Brian Frith, successfully negotiated a Collaboration Agreement with Macmillan UK and organised the incorporation of Macmillan Cancer Support (Jersey) Limited, an independent local charity, where every penny raised stays in the Island to fund the vital services we provide.

Our challenges and aim

Cancer is on the rise. One in two people will hear the words 'you have cancer' in their lifetime, meaning that all of us in some way will become affected by a cancer diagnosis, whether ourselves or through supporting someone we know. Approximately 600 people in Jersey are diagnosed each year and we estimate at any point there are 4,000 people living with, or beyond a cancer diagnosis. The increase is mainly because people are living longer. Due to improved treatments and earlier diagnosis, many more people will live beyond cancer and our service aims to meet the growing demand and changing needs. Many people experience physical, emotional and financial consequences of cancer and its treatment and this can remain the case for many years after treatment has ended.

Macmillan Jersey's aim is to help everyone affected by cancer to live well and to take back control of their lives through their experience with cancer. We are experts in providing emotional, practical and wellbeing support services to patients and their loved ones.

With the impact of COVID-19, Macmillan Jersey also has the additional challenge of supporting people with the many consequences that the pandemic is having on local/national health care services and personal circumstances, especially the increased isolation and uncertainty experienced by our service users.

How does Macmillan Jersey work with Macmillan Cancer Support in the UK?

Macmillan Jersey and Macmillan Cancer Support UK have a collaboration agreement, whereby we maintain the Macmillan brand and the quality standards, in place for providing cancer support. Macmillan UK support us with training and information materials. There is also a Macmillan UK representative on our local Board of Directors. Macmillan Jersey is financially and operationally independent of Macmillan in the UK.

Working with others

Macmillan Jersey is committed to working in collaboration with others who share an interest in supporting people in Jersey affected by cancer. It will not duplicate work that is already meeting the needs of people affected by cancer and will continually explore opportunities for partnership and new collaborations.

Registered name of charity

Macmillan Cancer Support (Jersey) Limited ("Macmillan Jersey")

Incorporation

Macmillan Cancer Support (Jersey) Limited is a company limited by guarantee and was incorporated on 25 September 2009 under Registered Number 104090.

Registration

As an incorporated charity (non-profit organisation), Macmillan Cancer Support (Jersey) Limited is registered with the Jersey Financial Services Commission and is a member of the Association of Jersey Charities (number 355). It is also registered with the Jersey Charity Commissioner under the new regulatory arrangements of the Charities (Jersey) Law 2014 (number 58). The charity's governing document is the Memorandum and Articles of Association, dated 25th September 2009.

Charitable Objects as detailed within our Memorandum and Articles of Association

The objects of Macmillan Jersey are as follows:

- to provide support, assistance and information directly or indirectly to people affected by cancer in particular, but without limitation, to people who are resident in the Island of Jersey;
- to further and build cancer awareness, education and research;
- to promote and influence effective care, involvement and support for people affected by cancer (which shall include individuals who have suspected or confirmed diagnosis, their carers, families, work colleagues and anyone else directly, or indirectly affected by cancer), in particular, but without limitation, in the Island of Jersey.

Principal Activity

For the last 34 years, Macmillan Jersey has been providing high-quality support, information and wellbeing services to anyone affected by cancer. We work in collaboration with Macmillan Cancer Support in the UK and predominantly operate from "The Oasis", our cancer support and wellbeing centre at the Lido Medical Centre. We aim to support patients, their friends, families and colleagues and to enable them to cope with cancer and the wider impact of having it – from pre-diagnosis, through treatment, to cure, continuing illness, or death and into bereavement.

Public benefit statement

The Directors have considered the purpose, aims and objectives of the charity and its current and planned activities against general guidance on public benefit. The Directors are satisfied that the charity's purpose, aims, objectives and activities are fully consistent with charitable purposes as defined in the Charities (Jersey) Law 2014 Article 6.

Directors

Directors during 2021 and up to the date of this report are set out on page 36 of this report.

Macmillan Jersey recognises that a robust, independent and effective Board of Directors is essential if the Charity is to achieve its objectives; that the Board must have available to it all of the knowledge and skills required to govern the Charity; and that individual Directors must have sufficient knowledge, both of being a Director in general and of the Charity's activities to enable them to carry out their role. Directors receive no remuneration for their time and can claim only documented expenses incurred in carrying out their duties in line with the Expenses Policy. It should be noted that the Executive Director resigned from the Board on 21st February 2022.

Structure, governance and management

The Board of Directors, with input from all the members of team and stakeholders, is responsible for setting Macmillan Jersey's strategic objectives, the strategy to achieve them and the major policies of the Charity.

It is responsible for directing the Chief Executive Officer, monitoring performance and for identifying and managing the major risks facing the Charity. The Board meets at least four times a year and one of these meetings is a full day strategic planning session with the senior management team.

The CEO with support from the senior management team advises the Board in its activities and, in line with agreed delegated responsibility and subject to executive limitations, is responsible and fully accountable for achieving strategic objectives, including annual key objectives agreed by the Board.

A corporate governance sub-committee has been developed to be responsible for overseeing the corporate governance for Macmillan Jersey, to include the signing-off of policies and procedures and includes the Director of Governance, Director of Sustainability, CEO, Head of Income and Operations, Macmillan Cancer Support Service Manager and skilled volunteer representation. This committee reports directly to the quarterly Board of Directors meetings.

In 2020 the Board also established a Cancer Support Service Sub-Committee to focus on the design and delivery of the Service which is currently under review.



Our Team

Top left to bottom right:

Kevin Alway

Kate Fitzpatrick

Lauren Perchard - Rees

Stephanie Gibaut

Kerrie Le Crom

Sandra Teixeira

Georgie Phillips

Jo McCloskey

Pam Aubert

Operations and Communications Manager

Cancer Support and Wellbeing Practitioner

Chief Clinical Officer

Chief Executive Officer

Cancer Support Worker

Café Supervisor

Lead Complementary Therapist

Charity Support Coordinator

Service Manager



Our Board

Top left to bottom right:

Catherine Cooke

Director of Sustainability

Mark Hucker

Director of Fundraising & Strategy

Danielle Pearse

Director of Communications

Sivasithamparam Himayakanthan

Director / Oncologist

Michael Bellamy

Director / GP

Lauren Perchard-Rees

Executive Director

Paul Savery

Chairman

Michelle Fielding

Finance Director

Tina Stuchfield

Director of HR

Scott Le Flour

Director of Governance

Chris Scally

Director (Macmillan UK)

Elsa Rocha Abreu

Company Secretary



Volunteers

There is a famous quote that goes "Volunteers are not paid - not because they are worthless, but because they are priceless".

Without the volunteers who so willingly offer their time, expertise, dedication and passion to our island-based charity - we simply wouldn't be able to offer the support we do.

With the obstacles the past few years have brought - we are and will always be forever grateful for your support.

Thank you

From all of us at Macmillan Jersey.

Fundraising Review

The initial financial forecast for 2021 predicted an income of £634,000. The total gross income in 2021 was £747,455. This is nearly 18% more than the original forecast. In 2020, a significant portion of our income was raised by a large donation in memorium, however 2021 returned to the pre-pandemic split, with 'events' generating most of the income, followed by grants.

The individual fundraisers supporting the charity in 2021 collectively raised £44,768. This money raised was 79% higher than forecast. Community Fundraising was also 18% higher than forecast with an income of £59,542. The majority of this came from the Gary Burgess crowd funder.

Our corporate financial support was 67% higher than forecast, with a total income raised of £41,707. This was 8% more than the corporate income for 2020.

Finally, our charity book cafe, The Lounge for Macmillan Jersey, generated a trading income of £32,223. This was 36% less than we forecast in 2021, however this was a 19% increase on the income for 2020. In addition to the trading income, The Lounge received £3,916 in government funding for staff salaries as part of the Covid Co-Funding scheme.

Financial Review

The detailed financial figures for the year ending 31 December 2021 are set out on pages 26 to 27.

The Charity's principle funding sources are donated income (donations, legacies and grants) and fundraising activities.

Despite the lack of some of the Charity's annual Central Events, Macmillan Jersey's income increased by nearly 29% which was due to a very generous in memorium donation and a very successful Cycle Challenge. It's expenditure increased by 19% resulting in a surplus of £203,061. The Charity is very optimistic given that more Central Events will be able to be held during 2022 and the Board is confident that the Charity will not have any major financial difficulties and will continue to be able to offer its services.

Reserves Policy

It is the policy of the Charity to accumulate funds to be used for the charitable purposes including in the constitutional documents and agreed strategies. All funds not distributed in the year that they are raised will be held on account for future years.

As the activities of the Charity develop and donated funds are accumulated, it is the policy of the Charity to maintain a sum equivalent to a minimum of six (6) months' general activities and a maximum of twelve (12) months' general activities. As of 31 December 2021 £363,000 was held for this purpose. If surpluses of income over expenditure are accumulated to a sum equivalent to more than twelve (12) months' general activities, the Board should consider allocating these funds to Special Projects in line with its charitable purposes and objectives. These Special Projects may be in the current year or in future years, on a one-off or ongoing basis.

The Directors decided in 2021 to retain funds above the level of the normal Reserves Policy to finance the acquisition and/or development of future long-term premises for the Charity.

Restricted Funds

Charity "ABC" donated £2,000 to be used to host Nicola Jane events (post breast cancer surgery).

Risk Management

The Board of Directors is responsible for the identification and management of risk. This process is managed by way of the Risk Register, which documents the nature of the risk, the potential impact and mitigation factors. The Risk Register is reviewed quarterly by the Corporate Governance Sub-Committee of the Board.

The Board has identified the following main areas of risk:

- External risk of ongoing/future global disease outbreaks/pandemics and disaster recovery and planning.
- Operational risk in terms of delivering extended services during and post pandemic, loss of key staff, and recruitment and retention of sufficient skilled volunteers.
- Financial risk due to not having sufficient cash flow and reserves to deliver the Charity's objectives, and the risk of handling cash donations.

Directors' Responsibilities

The Directors are responsible for preparing their report and the financial statements in accordance with applicable laws and regulations. Company law requires the Directors to prepare financial statements for each financial year. Under that law the Directors have elected to prepare the financial statements in accordance with United Kingdom Generally Accepted Accounting Practice (United Kingdom Accounting Standards and applicable law). The financial statements are required by law to give a true and fair view of the state of affairs of the company and of the profit or loss of the company for that period.

In preparing these financial statements, the Directors are required to:

- Select suitable accounting policies and then apply them consistently;
- Make judgements and estimates that are reasonable and prudent; and
- Prepare the financial statements on the going concern basis, unless it is inappropriate to presume that the company will continue in business.

The Directors are responsible for keeping proper accounting records that disclose with reasonable accuracy at any time the financial position of the company and enable them to ensure that the financial statements comply with the Companies (Jersey) Law 1991. They are also responsible for safeguarding the assets of the company and hence for taking reasonable steps for the prevention and detection of fraud and other irregularities.

The Directors also approve the Directors' Report.

Going Concern

Taking into account the effects on the Charity of Covid-19, the Directors are still confident that the Charity will be able to continue as a going concern for the foreseeable future.

On behalf of the board

A handwritten signature in black ink, consisting of a series of loops and a long horizontal stroke extending to the right.

Director, Macmillan Jersey

INDEPENDENT CHARTERED ACCOUNTANTS' REVIEW REPORT TO THE DIRECTORS OF MACMILLAN CANCER SUPPORT (JERSEY) LIMITED

We have reviewed the financial statements of Macmillan Cancer Support (Jersey) Limited for the year ended 31 December 2021 set out on pages 10 to 23. The financial reporting framework that has been applied in their preparation is applicable law and United Kingdom Accounting Standards (United Kingdom Generally Accepted Accounting Practice).

Directors' Responsibility for the Financial Statements

As explained more fully in the Directors' Responsibilities Statement, in the Directors' Report on page 2, the directors are responsible for the preparation of the financial statements and for being satisfied that they give a true and fair view.

Accountants' Responsibility

Our responsibility is to express a conclusion on the financial statements. We conducted our review in accordance with International Standard on Review Engagements (ISRE) 2400 (Revised) *Engagements to review historical financial statements* and ICAEW technical release TECH 09/13AAF (Revised) *Assurance review engagements on historical financial statements*. ISRE 2400 (Revised) requires us to conclude whether anything has come to our attention that causes us to believe that the financial statements, taken as a whole, are not prepared, in all material respects, in accordance with Financial Reporting Standard 102, the Financial Reporting Standard applicable in the UK and the Republic of Ireland. ISRE 2400 (Revised) also requires us to comply with the ICAEW Code of Ethics.

Scope of the Assurance Review

A review of financial statements in accordance with ISRE 2400 (Revised) is a limited assurance engagement. We have performed procedures, primarily consisting of making enquiries of management and others within the entity, as appropriate, applying analytical procedures, and evaluating the evidence obtained. The procedures performed in a review are substantially less than those performed in an audit conducted in accordance with International Standards on Auditing (UK). Accordingly, we do not express an audit opinion on these financial statements.

Conclusion

Based on our review, nothing has come to our attention that causes us to believe that the financial statements have not been prepared:

- so as to give a true and fair view of the state of the company's affairs as at 31 December 2021, and of its surplus for the year then ended;
- in accordance with the requirements of the Statement of Recommended Practice applicable to charities preparing their accounts in accordance with the Financial Reporting Standard applicable in the UK and the Republic of Ireland (FRS 102) (effective 1 January 2019); and
- in accordance with the requirements of the Companies (Jersey) Law 1991.

Use of our report

This report is made solely to the company's directors, as a body, in accordance with the terms of our engagement letter dated 18 October 2017. Our review work has been undertaken so that we may state to the company's directors those matters we have agreed to state to them in a reviewer's report and for no other purpose. To the fullest extent permitted by law, we do not accept or assume responsibility to anyone other than the company and the company's directors as a body, for our review work, for this report, or for the opinions we have formed.

Rosscot

ROSSCOT
Chartered Accountants
2nd Floor, Commercial House
Commercial Street
St. Helier
Jersey JE2 3RU

Date: 20 June 2022

Financial Statements

Statement of Financial Activities (including Income and Expenditure Account).

For the year ended 31 December 2021

		2021			2020		
		Unrestricted Funds £	Restricted Funds £	Total Funds £	Unrestricted Funds £	Restricted Funds £	Total Funds £
Income	Notes						
Legacies, donations and grants:							
Legacies and in Memorium	3	162,758		162,758	253,850	-	253,850
Donations and Third Party	4	157,722		157,722	110,032		110,032
Fundraising	5,13 &						
Trusts, Grants & Foundations	21	146,704	37,500	184,204	140,308	11,596	151,904
		467,184	37,500	504,684	504,190	11,596	515,786
Income from trading activities and central events	6	239,063	-	239,063	52,979	-	52,979
Total funds raised income		706,247	37,500	743,747	557,169	11,596	568,765
Interest received		3,708	-	3,708	3,018	-	3,018
Total Income		709,955	37,500	747,455	560,187	11,596	571,783
Expenditure							
Cost of raising funds	7a & 8	164,421	-	164,421	126,141	-	126,141
Expenditure on charitable activities	7a	361,326	18,647	379,973	320,206	11,641	331,847
Total expenditure		525,747	18,647	544,394	446,347	11,641	457,988
Net income		184,208	18,853	203,061	113,840	(45)	113,795
Reconciliation of funds							
Total funds brought forward		770,059	9,924	779,983	656,219	9,969	666,188
Total funds carried forward		954,267	28,777	983,044	770,059	9,924	779,983
		note 21					

These financial statements are unaudited.

The notes on pages 31 to 37 form part of these financial statements.

Balance Sheet

As at 31 December 2021

	Notes	2021		2020	
		£	£	£	£
Fixed Assets					
Tangible Assets	14		79,622	-	92,543
Intangible Assets	15		11,970	-	-
Current Assets					
Debtors	16	28,339		44,460	
Cash at bank and in hand	17	1,058,108		795,466	
		<u>1,086,447</u>		<u>839,926</u>	
Liabilities					
Creditors: amounts falling due within one year					
Other Creditors and Accruals	18	<u>193,181</u>		<u>150,486</u>	
Net current assets			893,266		689,440
Creditors: amounts falling due after one year					
Long-term Liability	19		1,814		2,000
Net current assets			<u>983,044</u>		<u>779,983</u>
The funds of the charity					
Restricted income funds	21		28,777		9,924
Unrestricted funds	(page 26)		954,267		770,059
Total funds of the charity			<u>983,044</u>		<u>779,983</u>

These financial statements were approved by the Board of Directors on 25th April 2022 and signed on their behalf by:



Director - Chairman



Finance Director

Statement of cash flows

As at 31 December 2021

Reconciliation of net cash provided by/(used in) Operating Activities	2021 (£)	2020 (£)
Net surplus for the reporting period (as per the Statement of Financial Activities)	203,061	113,795
Adjustments for:		
Depreciation charges (note 14)	15,879	23,190
Amortisation charges (note 15)	5,985	-
Investment income	(3,708)	(3,018)
Change in debtors	16,121	(21,048)
Change in creditors	42,509	101,774
Cash Flows from operating activities	279,847	214,693
Cash flows from investing activities:		
Purchase of plant and equipment (note 14)	(2,958)	(1,197)
Website (note 15)	(17,955)	-
Interest received	3,708	3,018
Net cash used in investing activities	(17,205)	1,821
Change in cash and cash equivalents in the reporting period	262,642	216,514
Cash and cash equivalents at the beginning of the reporting period	795,466	578,952
Change in cash and cash equivalents	262,642	216,514
Cash and cash equivalents at the end of the period	1,058,108	795,466

Notes to the financial statement

For the year ended 31 December 2021

1 Accounting Policies

1.1 Basis of Preparation of Financial Statements

The financial statements have been prepared under the historical cost convention and in accordance with applicable accounting standards in the United Kingdom, the Statement of Recommended Practice (SORP) 'Accounting and Reporting by Charities 2019', Financial Reporting Standards (FRS) 102 and the Companies (Jersey) Law 1991. Macmillan Cancer Support (Jersey) Limited meets the definition of a public benefit entity under FRS 102. Assets and liabilities are initially recognised at historical cost or transaction value unless otherwise stated in the relevant accounting policy notes(s).

1.2 Going concern

The charity reported a net cash inflow of £262,642 for the year. Despite the effects of the Covid-19 pandemic, the Directors are of the view that there are no material uncertainties regarding the Charity's ability to continue in operation. The Directors are confident that the charity will continue as a going concern for the foreseeable future.

The charity's functional and presentation currency is GBP.

The following principal accounting policies have been applied:-

Income and other expenses

Income arising from donations and fundraising is accounted for when received.

Bank interest and other immaterial expenses are accounted for on a receipts and payments basis.

For legacies, entitlement is taken on a case by case basis as the earlier of the date on which:

1. Probate is granted (provided that notification has been made by the executor(s) to the Charity that a distribution is expected), or
2. A distribution is received from the estate.

Grant income received

Grants are accounted under the accruals model as permitted by FRS 102. Grants relating to expenditure on tangible fixed assets are credited to the Statement of Income and Retained Earnings at the same rate as the depreciation on the assets to which the grant relates. The deferred element of grants is included in creditors as deferred income.

Grants of a revenue nature are recognised in the Statement of Income and Retained Earnings in the same period as the related expenditure.

Depreciation

Depreciation is provided so as to allocate the cost of assets less their residual value over their estimated useful lives, on a straight line basis over the period of their estimated useful life as follows:

Computers - 5 years

Leasehold Alterations The Oasis - 7 years
(based on remaining term of lease)

Leasehold Alterations The Lounge - 9 years
(based on term of lease)

Lounge equipment - 10 years

Office equipment - 10 years

Fixtures & Fittings - 10 years

Intangible assets

Intangible assets are initially recognised at cost. After recognition, under the cost model, intangible assets are measured at cost less any accumulated amortisation and any accumulated impairment losses.

All intangible assets are considered to have a finite useful life. If a reliable estimate of the useful life cannot be made, the useful life shall not exceed ten years.

Website - 10 years

Operating Leases

Rent-free periods received as an incentive to enter into an operating lease are credited to the Income and Expenditure Account, to reduce the lease expense, on a straight-line basis over the period of the lease.

Financial Instruments

The Charity only has financial assets and financial liabilities of a kind that qualify as basic financial instruments. Basic financial instruments are initially recognised at transaction value and subsequently measured at their settlement value.

2 Legal Status of the Charity

The company is incorporated as a private company limited by guarantee in Jersey under the Companies (Jersey) Law 1991 with company number 104090 and does not have a share capital. The guarantors as set out in the Memorandum of Association and their liability in the event of the company being liquidated are:

	Sum Guaranteed	
Paul Savery	£1.00	
Lauren Perchard-Rees	£1.00	
3 Legacies and In Memorium		
	2021 (£)	2020 (£)
Legacies	-	-
In Memorium	162,758	253,850
	162,758	253,850

The Charity did not receive any legacies in 2021. However, it received a large donation of £150,000 in memory of Barry Burns. These funds are to be used to help the Charity continue with the provision of its services.

4 Donations and third party fundraising

	2021 (£)	2020 (£)
	Unrestricted	Unrestricted
Community Fundraising and Donations	59,542	12,907
Corporate Fundraising and Donations	41,707	38,654
Friends of Macmillan Jersey	7,524	5,330
In Lieu of Presents	4,181	954
Individual Fundraising and Donations	44,768	52,187
	157,722	110,032

Corporate Fundraising and Donations includes donated services as detailed in note 12.

5 Trusts, grants and foundations

	2021 (£)	2021 (£)	2020 (£)	2020 (£)
	Unrestricted	Restricted	Unrestricted	Restricted
Trusts, grants and foundations	142,788	37,500	107,306	11,596
States of Jersey Grants	3,916	-	27,288	-
Leasehold Alterations	-	-	5,714	-
	146,704	37,500	140,308	11,596

note 21

6 Income from trading activities and central events

	2021 (£)	2020 (£)
	Unrestricted	Unrestricted
Central events	206,840	25,952
The Lounge	32,223	27,027
	239,063	52,979

6 Income from trading activities and central events (continued)

Analysis of Central Events:

	2021 (£) Gross Receipts	2021 (£) Related Expenditure	2021 (£) Net Receipts	2020 (£) Gross Receipts	2020 (£) Related Expenditure	2020 (£) Net Receipts
Get Together for Good	25,852	-	25,852	25,952	-	25,952
Cycle Challenge	180,988	31,896	149,092	-	-	-
Rowathon	-	-	-	-	3,682	(3,682)
	206,840	31,896	179,944	25,952	3,682	22,270
		note 7a				

The Lounge

	2021 (£)	2020 (£)
Income from Sale of Goods	<u>32,223</u>	<u>27,027</u>
Cost of Buying in Goods	8,872	12,174
Staff Costs	28,915	35,231
Property Costs	14,553	12,374
Other Costs	<u>2,290</u>	<u>1,706</u>
Total Expenditure	<u>54,630</u>	<u>61,485</u>
Net loss arising from The Lounge	<u>(22,407)</u>	<u>(34,458)</u>

The Lounge is a cafe and second hand bookshop located at 26 Burrard Street, St. Helier, Jersey which was opened in July 2019.

7 Expenditure

7a

	Direct staff costs (£)	Central Events Costs (£)	Apportioned support costs (£)	2021 £	2020 £
Cost or raising funds - note 8	80,618	31,896	51,907	164,421	126,141
Expenditure on charitable activities	270,335	-	109,638	379,973	331,847
	350,953	31,896	161,545	544,394	457,988
	note 9	note 6	note 7b		

Other direct costs associated with raising funds include direct event and campaign costs, marketing and advertising.

7b Analysis of apportioned support costs

	Governance £	Facilities and Other Expenditure £	Information Technology £	Finance, legal and secretarial £	2021 £	2020 £
Fundraising - note 8	-	47,987	2,631	1,289	51,907	42,136
Charitable	6,809	97,970	4,637	222	109,638	111,219
	6,809	145,957	7,268	1,511	161,545	153,355
	note 7c	note 7d	note 7e	note 7f	note 7a	

Support costs, including staff costs, were apportioned on a basis agreed by the directors. Governance costs are apportioned on the same basis.

7c Analysis of governance costs

	2021 £	2020 £
Assurance Report Fee	4,500	4,500
Legal and Professional fees	2,309	1,191
note 7b	6,809	5,691

7d Analysis of facilities and other expenditure

	2021 £	2020 £
Lido Centre		
Repairs and Renewals	108	402
Office Cleaning	267	123
Rent	40,462	40,245
Utilities & Rates	2,876	3,497
Sundry Kitchen Supplies	303	389
	44,016	44,656

Fundraising/ Burrard Street

Rent	12,153	11,111
Utilities & Rates	1,324	1,036
Sundry Kitchen Supplies	-	7
	13,477	12,154

The Lounge

Repairs and Renewals	1,056	476
Rent	12,153	11,111
Utilities & Rates	1,345	787
Coffee Shop Purchases	8,872	12,174
	23,426	24,548

7d Analysis of facilities and other expenditure continued.

General expenses

	2021 £	2020 £
Advertising, Marketing, Design and Website	1,708	2,961
Books/CDs	75	227
Complementary Therapy Services	1,267	-
Wellbeing Services	3,923	4,020
Funding of Dietician Post	17,818	17,818
Networking and Education	210	45
Travel Expenses	963	1,564
Office Supplies	494	715
Training	7,101	2,267
Depreciation	15,879	23,190
Amortisation	5,985	-
Entertaining	900	139
Postage and Printing	3,137	2,709
Outreach	79	-
Sundry Expenses/ Subscriptions	896	1,264
Insurance	4,603	2,574
	65,038	59,493

Total facilities and other expenditure

note 7b

145,957	140,851
---------	---------

7e Analysis of Information technology

	2021	2020
	£	£
IT Services	2,116	1,819
Telephone and Internet	5,152	4,356
note 7b	7,268	6,175

7f Analysis of finance, legal and secretarial

	2021	2020
	£	£
Bank and other charges	1,511	638
note 7b		

8 Expenditure on raising funds

	2021	2020
	£	£
Direct Staff Costs	80,618	80,323
Central Events Costs	31,896	3,682
Apportioned Support Costs	51,907	42,136
note 7b	164,421	126,141

9 Analysis of Staff Costs

	2021	2020
	£	£
Charitable Activities	259,375	209,722
Fundraising	73,248	74,202
Social Security	18,330	17,027
note 7a	350,953	300,951

There is no provision for Occupational Pension or Occupational Medical scheme. However, in January each year the Charity may make a discretionary payment of up to 10% of a staff member's annual salary, subject to them meeting their personal development review objectives. The key management personnel of the Charity is the Chief Executive Officer.

The number of employees whose total employee benefits excluding pension contributions exceed £60,000 during the year, classified within bands of £10,000 is as follows:

	2021	2020
	£	£
£80,000-£89,999	1	1

10 Staff Numbers

The total number of staff employed during 2021 was 6 full-time employees and 3 part-time employees compared to 5 full-time and 2 part-time employees in 2020.

11 Related Party Transactions

There have been no related party transactions during the accounting period.

12 Donated services (see note 4)

Donated services and facilities are valued and included as income and expenditure at the price that Macmillan Jersey estimates it would pay in the open market for an equivalent service or facility. In 2021, a charge and related donation of £5,152 was donated by Jersey Telecoms and Rosscot discounted its charge for assurance services by £2,000.

13 Grants received for refurbishment

During 2014, two grants were received each for a value of £20,000 totaling £40,000. Both grants were provided to cover costs in relation to the alterations to the leasehold premises at Lido Medical Centre. The total of £40,000 was recognised as income over the remaining 7 years of the lease period at £5,714 per annum, in line with the amortisation policy on the leasehold alterations.

14 Tangible assets

	Leasehold Alterations The Oasis £	Leasehold Alterations The Lounge £	Fixtures & Fittings £	Office Equipment £	Lounge Equipment £	Computers £	Total £
Cost							
At 1 January 2021	43,560	110,463	17,887	22,584	-	5,254	199,748
Additions in year	-	-	-	406	2,552	-	2,958
At 31 December 2021	43,560	110,463	17,887	22,990	2,552	5,254	202,706
Depreciation							
At 1 January 2021	43,560	24,548	17,887	18,218	-	2,992	107,205
Charge for the year	-	12,274	-	2,299	255	1,051	15,879
At 31 December 2021	43,560	36,822	17,887	20,517	255	4,043	123,084
Net Book Value at 31 Dec 2021	-	73,641	-	2,473	2,297	1,211	79,622
Net Book Value at 31 Dec 2020	-	85,915	-	4,366	-	2,262	92,543

Leasehold alterations - The Oasis relates to premises at Lido Medical Centre, St Saviour known as "The Oasis".

Leasehold alterations - The Lounge relates to premises at 26 Burrard Street, St. Helier known as "The Lounge".

15 Intangible assets

	Website £
Cost	
At 1 January 2021	-
Additions in year	17,955
At 31 December 2021	17,955
Amortisation	
At 1 January 2021	-
Charge for the year	5,985
At 31 December 2021	5,985
Net Book Value at 31 Dec 2021	11,970

16 Debtors

	2021 £	2020 £
Trade debtors	12,937	157
GST recoverable	4,216	4,197
Sundry debtors and Prepayments	11,186	40,106
	28,339	44,460

17 Cash at bank and in hand

	2021 £	2020 £
Cash at bank and in hand	594,864	435,942
Notice Deposits	463,244	359,524
	1,058,108	795,466

There is no overdraft facility.

18 Short Term Creditors

	2021 £	2020 £
Creditors due within one year		
Trade Creditors	2,064	843
Taxation and Social Security	13,219	6,468
Accruals	2,500	2,500
Rent-free period	16,898	19,676
Sponsorship in advance	-	56,211
Grants Income in Advance	158,500	64,788
	<u>193,181</u>	<u>150,486</u>

19 Long Term Creditors

	2021 £	2020 £
Creditors due after one year		
Long-term Liability - ABC note 21	1,814	2,000
	<u>1,814</u>	<u>2,000</u>

20 Remuneration of Directors

With the exception of the CEO, Directors receive no remuneration for their time and can claim only documented expenses incurred in carrying out their duties in line with the Expenses Policy.

21 Restricted Funds

During 2019 the After Breast Cancer charity "ABC" donated £2,000 (note 19) to be used to host Nicola Jane events (post breast cancer surgery). Due to the Covid pandemic, few events could take place. The funds received from the Jersey Association of Cancer Nurses in 2018 now amount to £7,714 and will be used for networking and education purposes. During 2021 the Charity received a grant of £37,500 to fund some Support Groups, training of the Senior Cancer Support Specialist and a Complementary Therapist.

Restricted Funds	b/f £	Income £	Expenditure £	c/f £
Cancer Networking/ Education	7,924	-	210	7,714
ABC Support Groups	2,000	-	186	1,814
Training	-	20,000	3,251	16,749
Comp Therapist	-	2,500	2,500	-
	-	15,000	12,500	2,500
	<u>9,924</u>	<u>37,500</u>	<u>18,647</u>	<u>28,777</u>

22 Designated Funds

A dietician is being funded by Macmillan UK with Macmillan Jersey having agreed to pay £49,435 over a three year period by way of a partner contribution. £35,635 has been paid to the States of Jersey in respect of the salary contribution from Macmillan Jersey, the remaining £13,800 has been retained by Macmillan Jersey and is to be used in relation to the oncology dietician service and the contracted professionals delivering the service, such as training, equipment and group support activity.

23 Rental of Premises

The Charity occupies Suite 2.13 at the Lido Medical Centre. The initial nine year lease has been extended for another two years terminating on 12th October 2023. The Charity also rents 26 Burrard Street for The Lounge and the Fundraising Department. It is a nine year lease effective from 1st February 2019 with a one year rent-free period. The current rent is £25,000 p.a and is subject to review in January 2022 and 2025 on the basis of the Jersey Retail Price Index.

Commitments under Operating Leases

At 31 December 2021 the Charity had future minimum lease payments under non-cancellable operating leases as follows:

Payment Due	2021 £	2020 £
Not later than one year	64,074	52,439
Later than one year and not later than five years	164,074	125,000
Later than five years	25,000	25,000
	<u>253,148</u>	<u>202,439</u>

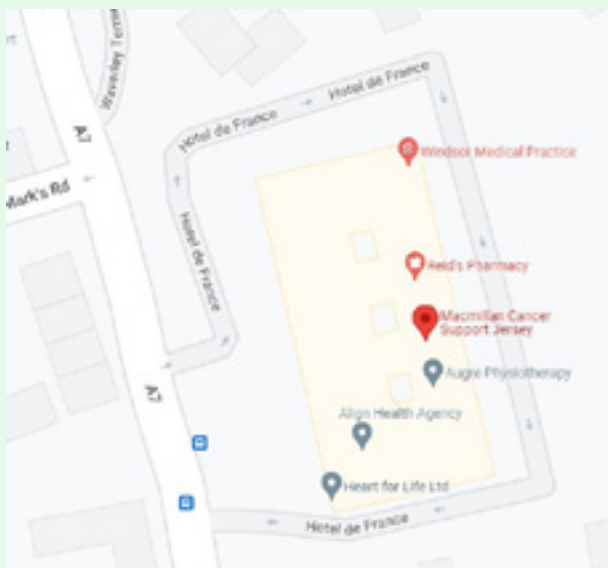
Officers and Professional Advisors

Registration Jersey, Channel Islands

Registration Number 104090 - incorporated on 25th September 2009

		Appointed	Resigned
Directors	Paul Savery	16/11/2020	
	Michelle Fielding	02/10/2009	
	Michael Bellamy	30/11/2010	08/11/2021
	Mark Hucker	16/11/2020	
	Sivasithamparam Himayakanthan	26/10/2013	
	Lisa Kendrick	04/02/2016	10/05/2021
	Janice Kearsey	09/03/2018	10/05/2021
	Christopher Scally	02/03/2020	
	Catherine Cooke	18/05/2020	
	Lauren Perchard-Rees (Exec Director)	16/11/2020	21/02/2022
	Scott Le Flour	22/06/2021	
	Danielle Pearse	22/06/2021	
	Tina Stuchfield	22/06/2021	
Company Secretary	Elsa Rocha Abreu	22/06/2021	
	Janice Kearsey	09/03/2018	10/05/2021
Assistant Secretary	Elsa Rocha Abreu	12/10/2020	22/06/2021
Registered Office	Suite 2.13 The Lido Medical Centre St. Saviour's Road St. Saviour Jersey JE2 7LA		
Accountants	Rosscot 2nd Floor Commercial House Commercial Street St. Helier Jersey JE2 3RU		
Bankers	NatWest 16 Library Place St. Helier Jersey JE4 8NH	Investec One The Esplanade St. Helier Jersey JE2 3QA	HSBC 27 Halkett Street St. Helier Jersey JE4 8NJ
Legal Advisors	Voisin Law 37 Esplanade St. Helier Jersey JE1 1AW		





The Oasis

01534 498188

Suite 2.13 Lido Medical Centre
St Saviours Road
JE2 7LA

Pam Aubert

Pam@macmillanjersey.com

Lauren Perchard-Rees

Lauren@macmillanjersey.com

Kate Fitzpatrick

Kate@macmillanjersey.com

Kerrie Le Crom

Kerrie@macmillanjersey.com

Georgie Phillips

Georgie@macmillanjersey.com



The Lounge

01534 498189

26 Burrard Street
St Helier
JE2 4WS

Steph Gibaut

Steph@macmillanjersey.com

Kevin Alway

Kev@macmillanjersey.com

Jo McCloskey

Jo@macmillanjersey.com

Sandra Silva

Sandra@macmillanjersey.com

Kieran Mitchell

Kieran@macmillanjersey.com

www.macmillanjersey.com

**MACMILLAN
CANCER SUPPORT
JERSEY**